

# REDHAWK

## 4 Passenger Stretch Bolt-on Kit, GAS-EFI

### PART #RH080CCPRBOEFI

### CLUB CAR - PRECEDENT

### INSTALLATION INSTRUCTIONS



TITLE: <b>RH080CCPRBOEFI INSTALLATION INSTRUCTIONS</b>		
DRAWN BY: R.HAERER	DATE: JAN 20, 2017	DWG NO. #7662
SHEET: 1 of 20	SCALE: Not To Scale	

## Save all fasteners for later use.

### Step 1. Tearing down your car.

Remove seat, top & seat back.  
Disconnect battery.  
Remove rear legs, bagwell top & posts.  
Disconnect F/R switch & remove bracket from plastic tub.  
Disconnect canister from tub crossbar.  
Remove rear body.



Remove gas tank.  
Remove crossbar and battery.  
Remove solenoid from tub and disconnect other wires/connectors. (make notes as necessary)



**NOTE:** Some pictures feature NON-EFI cars when the steps are universal.

Remove floor mat and front trim.  
Remove floor panel.  
Disconnect tail light wires/connectors.  
Remove rear bumper.  
Remove tub.



Remove dash, front cowl and trim.  
Remove peddle pad.  
Disconnect brake rod & throttle cable.  
Secure cables to engine.



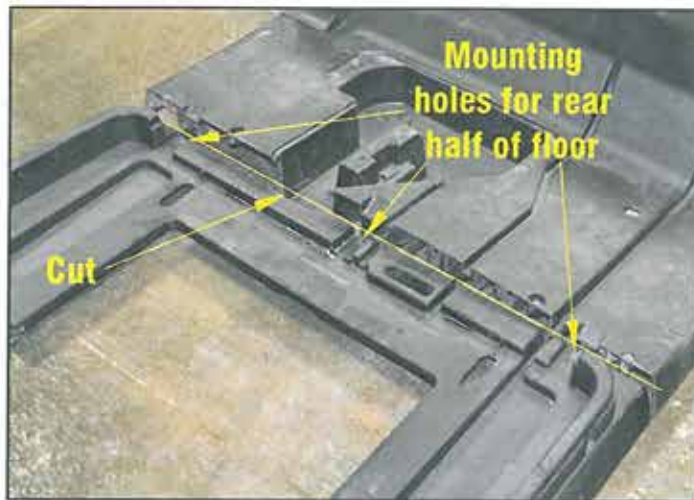
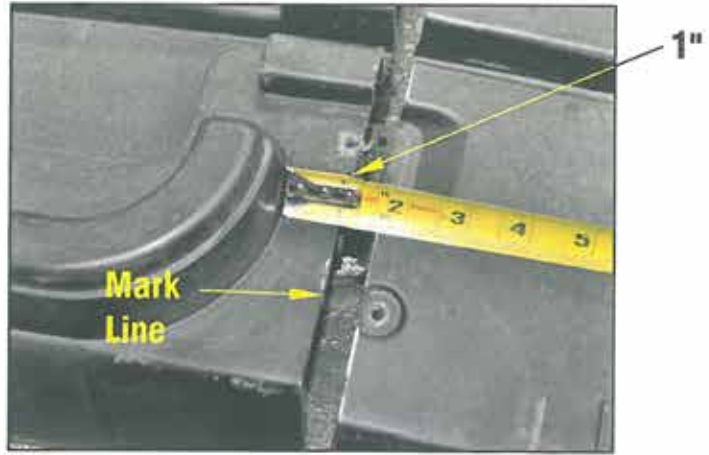
Remove rear assembly supports.  
Remove steering wheel.  
Remove floor & clean chassis if needed.



TITLE:		
<b>RH080CCPRBOEFI INSTALLATION INSTRUCTIONS</b>		
DRAWN BY: R.HAERER	DATE: JAN 20, 2017	DWG NO. #7662
SHEET: 2 of 20	SCALE: Not To Scale	



**Step 2. CRITICAL STEP** - Cut plastic floor in half. Mark cutting line 1" to the rear of the curved edge as shown.



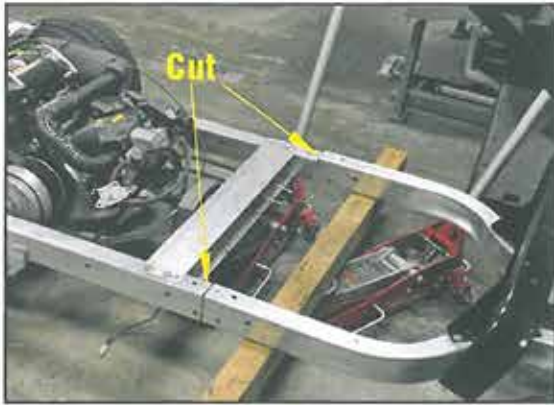
**Remove Rib (both sides)**

**Step 2b.** Under front half of floor, cut out 5" of inner rib down to wire channels on BOTH SIDES.

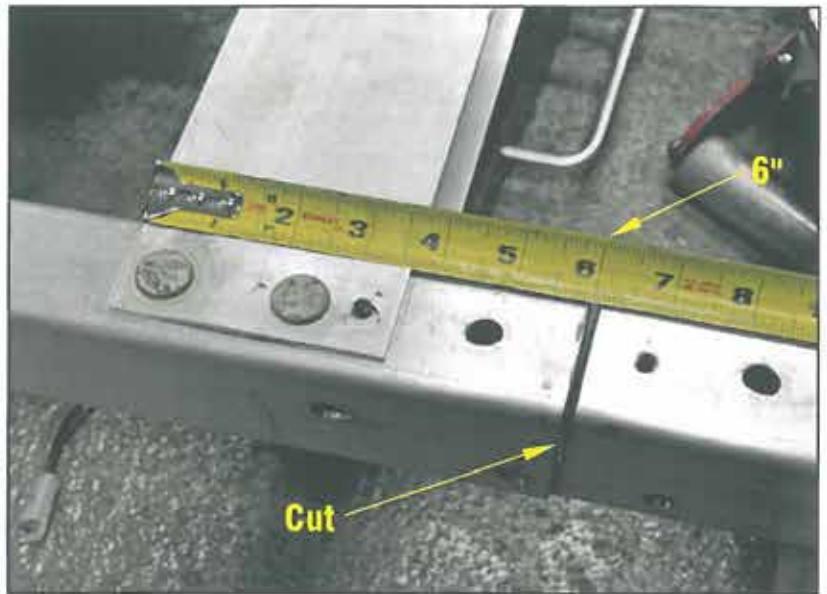


TITLE:		
<b>RH080CCPRBOEFI INSTALLATION INSTRUCTIONS</b>		
DRAWN BY: R.HAERER	DATE: JAN 20, 2017	DWG NO. #7662
SHEET: 3 of 20	SCALE: Not To Scale	

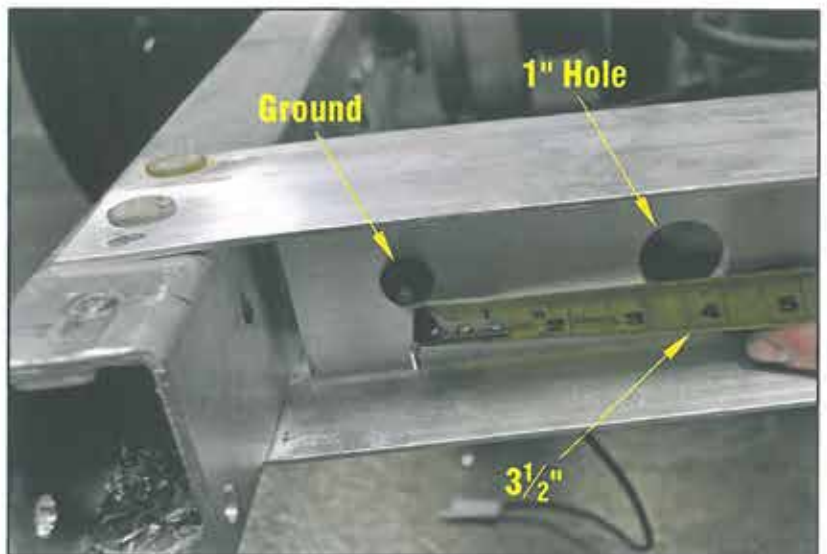
**Step 3. CRITICAL STEP** - Mark 6" back on frame as shown. Carefully cut frame in two. Be sure to make the cut square with the frame. Support the frame with floor jacks.



The rear of the car is now separated from the front.



**Step 4.** Drill 1" hole for FNR cable 3½" from factory ground (centered in channel).



TITLE:		
<b>RH080CCPRBOEFI INSTALLATION INSTRUCTIONS</b>		
DRAWN BY: R.HAERER	DATE: JAN 20, 2017	DWG NO. #7662
SHEET: 4 of 20	SCALE: Not To Scale	



## Lubricate all fasteners.

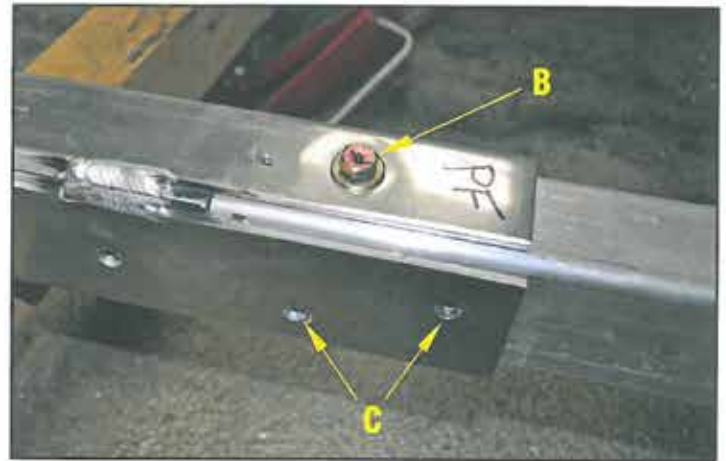
**Step 5.** Slide Driver and Passenger extension rails (Part #6597) onto rear frame until they stop. The inside of the extension goes inside the factory channel. Be sure that the extensions are straight and level with the frame. Use holes in the extensions as guides and drill two (2)  $\frac{3}{8}$ " holes through the factory channel from the top (Location "A"). Insert two (2)  $\frac{3}{8}$ " x 4" hex head bolts, four (4)  $\frac{3}{8}$ " flat washers and two (2)  $\frac{3}{8}$ " lock nuts. Do not tighten.



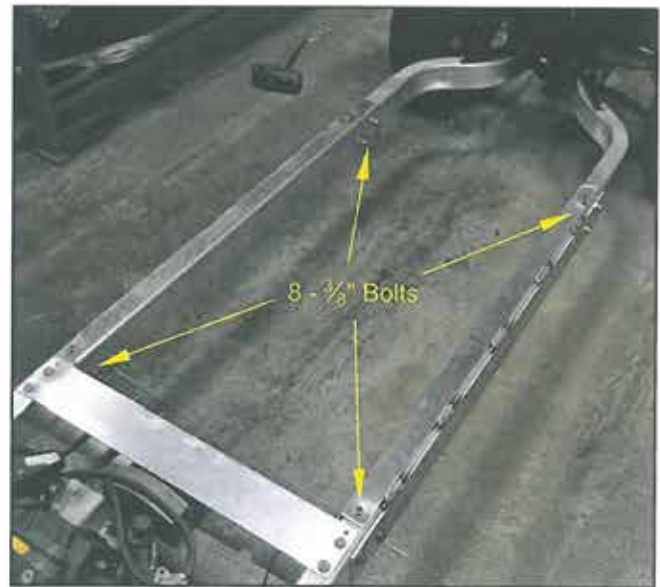
BRAKE CABLES

**D = Driver**                      **P = Passenger**  
**DF = Driver Front**          **PF = Passenger Front**  
**DR = Driver Rear**          **PR = Passenger Rear**

**Step 6.** Insert front frame into frame extensions until the frame contacts the inner tube of the extension. Be sure that the extensions are straight and level with the frame. Use holes in the extensions as guides and drill two (2)  $\frac{3}{8}$ " holes through the factory channel from the top (Location "B"). Insert two (2)  $\frac{3}{8}$ " x 4" hex head bolts, four (4)  $\frac{3}{8}$ " flat washers and two (2)  $\frac{3}{8}$ " lock nuts. Do not tighten.



**Step 7.** Square the frame using diagonal measurements. Drill eight (8)  $\frac{3}{8}$ " holes through front and rear frames using holes in extensions as guides (Location "C" typical). Insert eight (8)  $\frac{3}{8}$ " x  $3\frac{1}{2}$ " bolts, sixteen (16)  $\frac{3}{8}$ " flat washers and eight (8)  $\frac{3}{8}$ " lock nuts into holes. With frame square, tighten all twelve (12)  $\frac{3}{8}$ " bolts.



Remove jacks and stands.



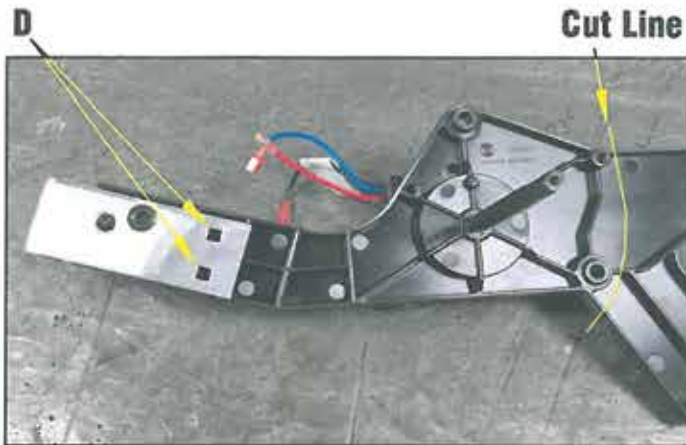
TITLE:

### RH080CCPRBOEFI INSTALLATION INSTRUCTIONS

DRAWN BY: R.HAERER	DATE: JAN 20, 2017	DWG NO. #7662
SHEET: 5 of 20	SCALE: Not To Scale	

**Step 8.** Remove relay box from the plastic FNR bracket. Remove the FNR cable from the plastic bracket and from the lever and bracket at the rear of the car. Using guide pin & bolt hole on back side of front FNR bracket, place part #7183 onto back of bracket. Mark & drill two (2) 1/4" holes at location "D". Secure using two (2) - 1/4" x 1" carriage bolts and two (2)-1/4" lock nuts. Attach ball stud to shifter lever in front of bracket using 1/4" hex nut and 1/4" lock washer.

Modify drivers side of FNR bracket,  
 Cut off the outer plastic legs on the bracket.  
 Make sure you leave the mounting holes.  
 \*See cut line on picture below.



**Step 9.** Holding the rear shifter lever firmly with pliers, drill existing hole out to 1/4". Attach second ball stud to rear lever using one (1) 1/4" hex nut & one (1) 1/4" lock washer.



**Step 10.** Place new accelerator cable bracket in line with old bracket slot and 1" to the rear of slot. Clamp new bracket in place and mark the two (2) holes. Drill two (2) 9/32" holes at the marks. Secure new accelerator bracket to the old bracket using two (2) - 1/4" x 1" hex head bolts, four (4) 1/4" flat washers and two (2)-1/4" lock nuts.



TITLE:		
<b>RH080CCPRBOEFI INSTALLATION INSTRUCTIONS</b>		
DRAWN BY: R.HAERER	DATE: JAN 20, 2017	DWG NO. #7662
SHEET: 6 of 20	SCALE: Not To Scale	



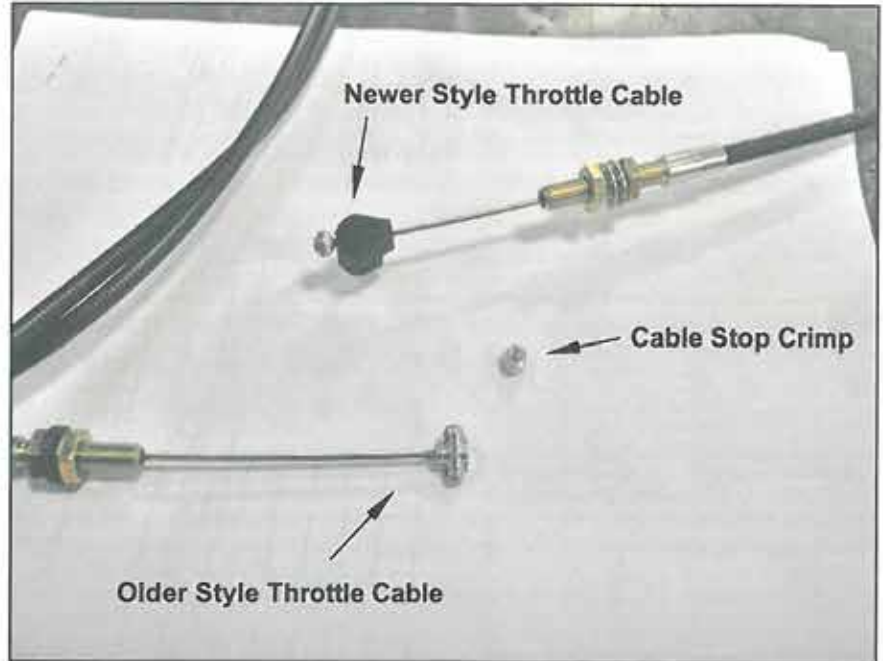
**Step 11.**

For the Newer Style Throttle Cables only. You will need to take the old short cable that came off your car, and cut its end stop off. So you can slide the black plastic piece off and reuse it on the new cable.

**Step 12.**

On the new longer Throttle Cable (PA1489), you will need to cut the end stop off close as possible. Slide the black plastic piece from your old cable onto the new cables end. Use the Cable Stop Crimp on the end to secure.

Now you can install the throttle cable to the rear of the car.



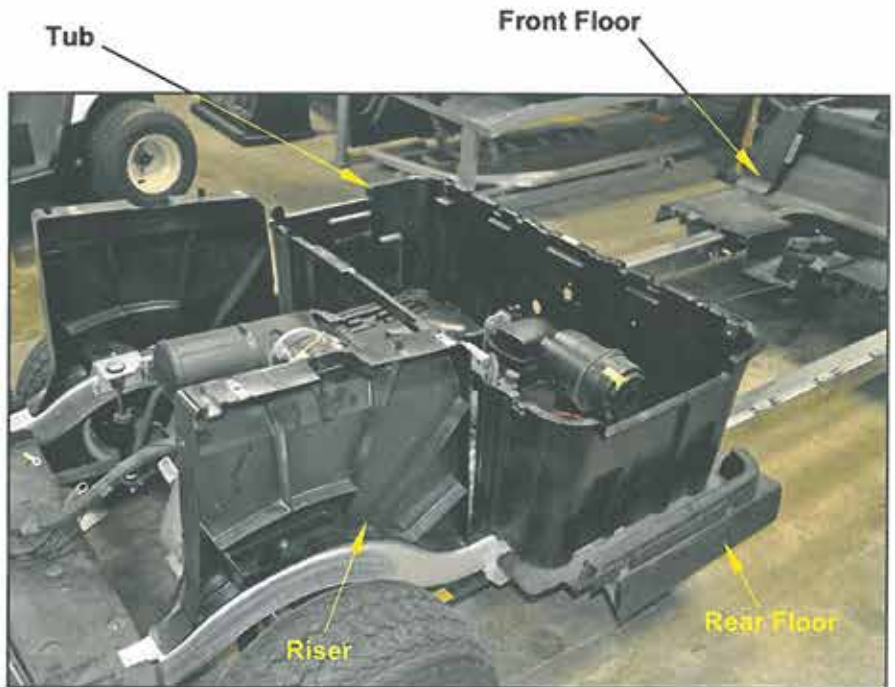
**Step 13.** Replace plastic floors. Be sure that floors clear bolt heads from frame extensions. Line up factory mounting holes (3 for front and 3 for rear) and secure front floor with factory bolts.

**Step 14.** Replace steering wheel.

**Step 15.** Run throttle cable through factory hole in snubber channel between snubber and brake cables. Lay cable to front of car.

**Step 16.** Replace rear risers to original positions. Do not attach at this time.

**Step 17.** Replace the seat tub with four (4) factory self tapping screws in original locations.



TITLE:		
<b>RH080CCPRBOEFI INSTALLATION INSTRUCTIONS</b>		
DRAWN BY: R.HAERER	DATE: JAN 20, 2017	DWG NO. #7662
SHEET: 7 of 20	SCALE: Not To Scale	

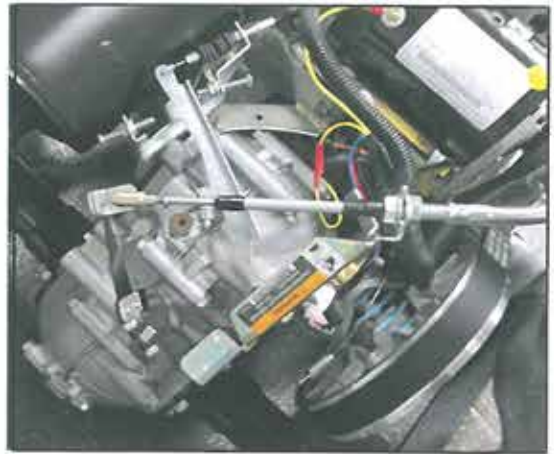
**Step 18.** Run wire harness out passenger side of seat tub through factory hole. Attach all wires/connectors that were disconnected at the rear of the car to the factory locations. Re-attach plugs to relay box on it's side and attach it between ribs on plastic tub. Attach with two (2) #8 x 3/4" PPH self tapping screws.

NOTE: Re-attach black ground wire with screw.



**Step 19.** Place slip joints onto each end of new shifter cable (FNR cable) to the OEM bracket and new ball stud on the shifter lever in the rear of the car.

\* You may need to bend OEM bracket away from lever using pliers. Adjust for best fit.



**Step 20.** Sit the middle sub-floor (Part #6582) between the frame extensions with the 1 1/2" hole located at the front of the passenger side. Insert six (6) 5/16" x 3 1/2" bolts and six (6) 5/16" flat washers from the inside of the frame extensions.



#6582

5/16" bolts used to secure outer sub-floor

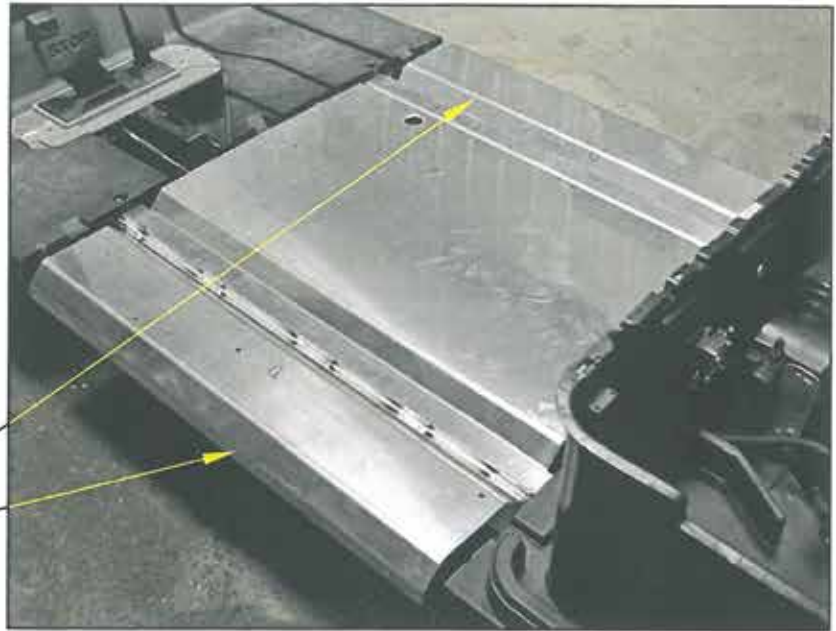


TITLE:		
<b>RH080CCPRBOEFI INSTALLATION INSTRUCTIONS</b>		
DRAWN BY:	DATE:	DWG NO.
R.HAERER	JAN 20, 2017	#7662
SHEET:	SCALE:	
8 of 20	Not To Scale	



**Step 21.** Secure the outer sub-floors (Part #6583 D&P) to the frame extensions with six (6)  $\frac{5}{16}$ " flat washers and six (6)  $\frac{5}{16}$ " lock nuts.

#6583



**Step 22.** Install factory brake equalizer and new brake rod (Part #6564). Run brake rod through brake rod guide under middle sub-floor to pedal location at front of car.



**Step 23.** Connect brake rod and accelerator cable to pedals. Install brake/accelerator pedal assembly on front floor. Adjust as needed. Brake pedal should have about 1" of play when properly adjusted.



TITLE:		
<b>RH080CCPRBOEFI INSTALLATION INSTRUCTIONS</b>		
DRAWN BY:	DATE:	DWG NO.  #7662
R.HAERER	JAN 20, 2017	
SHEET:	SCALE:	
9 of 20	Not To Scale	

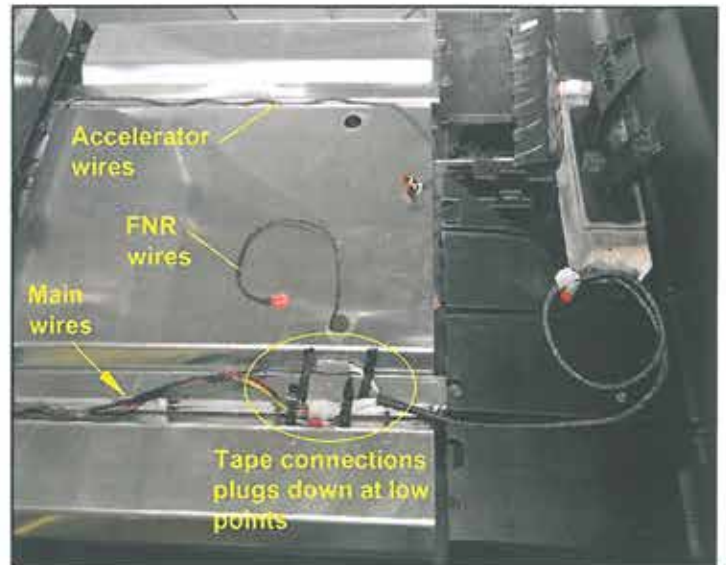
**Step 24.** Snap bagwell in place (do not secure at this time). Run factory brake light wires to rear of car and clip in place.



**Step 25.** Install the (4) wire extensions kits. Start from the rear of the car and plug in the Main wireharness (Part #PA1614), run on the passenger side of the car on top of the frame in the channel. ( You will need to tape down connection plugs in channel at lowest points.) Plug in the FNR wireharness (Part #PA1615), run under the frame and up the hole in the middle frame on passenger side. Install the Accelerator Pedal Wire Extension (Part#PA1617) & Accelerator 3- Wire Extension (Part#PA1618), run in drivers side channel on top of the frame. Run all wireharness kits back to there OEM positions.



Main wires  
FNR wires go below floor



**Step 26.** Place rear molding in position. Secure molding with three (3) original screws. Connect choke pin to factory hole on choke lever.

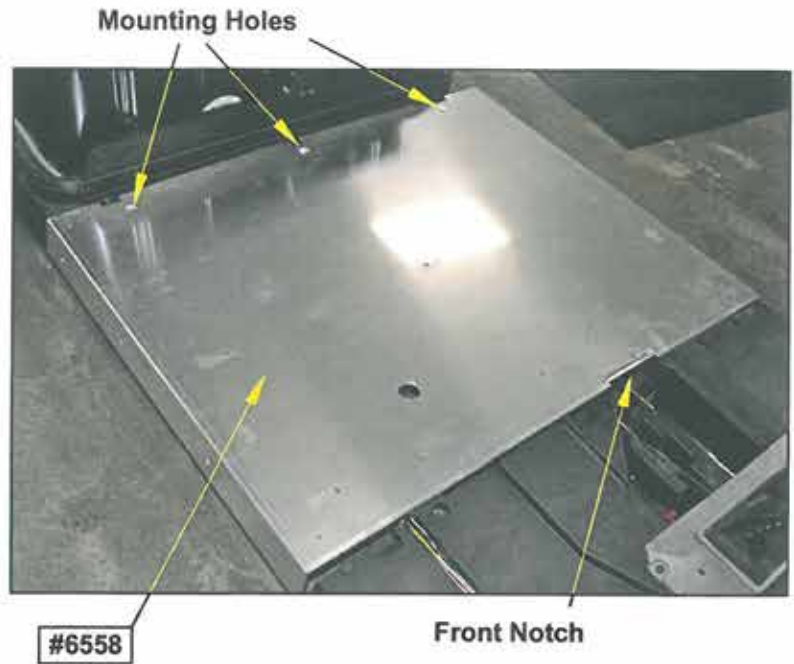
\*The tabs on the back of the molding should touch the tub.



TITLE:		
<b>RH080CCPRBOEFI INSTALLATION INSTRUCTIONS</b>		
DRAWN BY: R.HAERER	DATE: JAN 20, 2017	DWG NO. #7662
SHEET: 10 of 20	SCALE: Not To Scale	



**Step 27.** Install floor (Part #6558) with front notch lined up with accel./brake access panel. The three (3) notches at the rear line up with the tabs on the rear molding. Drill three (3)  $1\frac{1}{32}$ " holes through sub-floor using holes at rear as guides. Secure floor with three (3)  $\frac{5}{16}$ " x 1" truss head bolts, three (3)  $\frac{5}{16}$ " flat washers and three (3)  $\frac{5}{16}$ " lock nuts.



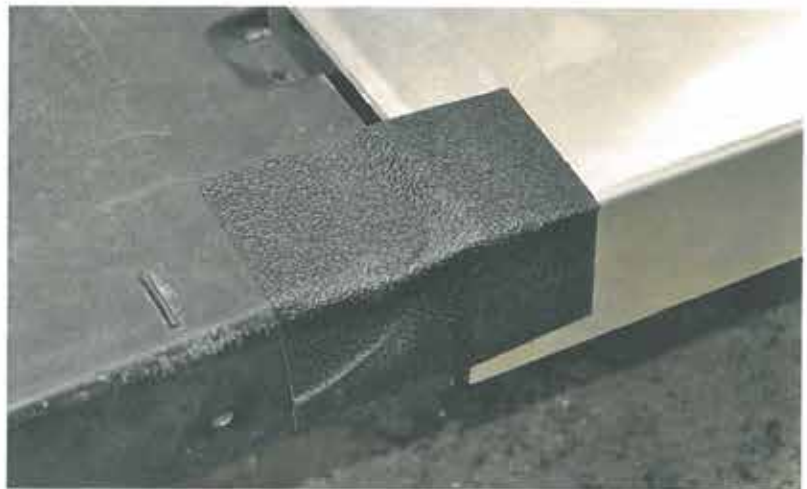
**Step 28.** Sit battery and gas tank back in place. Secure with factory fasteners. Connect fuel line and ground wire to tank. Run vent tube out back of tub. Install breather tube. Do not connect battery at this time.



**Step 29.** Install cover to access panel in front floor with original plastic plug.



**Step 30.** Install two (2) 6" kick trim pieces centered over gap between new floor and front plastic floor.



TITLE:

**RH080CCPRBOEFI  
INSTALLATION INSTRUCTIONS**

DRAWN BY:

R.HAERER

DATE:

JAN 20, 2017

DWG NO.

#7662

SHEET:

11 of 20

SCALE:

Not To Scale

**Step 31.** Install floor mat (Part #7080). Center side to side and tuck under rear molding. Cut 1½" hole in mat for FNR cable and wires using hole in the floor as a guide.

#7080

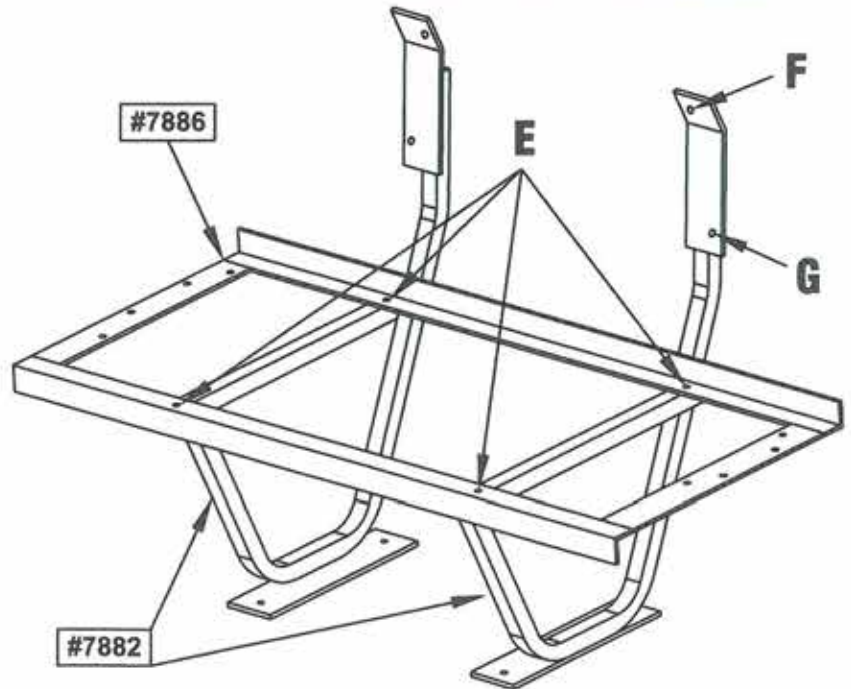


**Step 32.** Install front floor mat. Feed wire harness up to glove box and push up against front cowl.

wire harness



**Step 33.** Bolt together the middle pod. Secure the seat hat rack (Part #7886) to each seat support side post (Part #7882) at (Location E) using:  
 (4)- 5/16" x 1 3/4" truss head bolts,  
 (4)- 5/16" locknuts.



**Step 34.** Secure the seat back to each seat support side post (Part #7882) at top (Location F) using:  
 (2)- 6mm x 25mm hex head bolts,  
 (2)- 1/4" flatwashers.  
 Secure seat back at bottom (Location G) using:  
 (2)- 1/4" x 1 1/4" pan head sheet metal screws,  
 (2)- 1/4" flatwashers.

TITLE:

**RH080CCPRBOEFI  
 INSTALLATION INSTRUCTIONS**

DRAWN BY:  
 R.HAERER

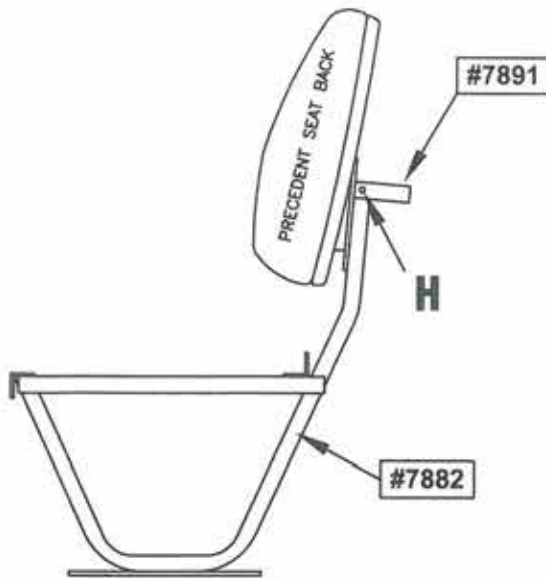
DATE:  
 JAN 20, 2017

DWG NO.  
 #7662

SHEET:  
 12 of 20

SCALE:  
 Not To Scale





**Step 35.**

Secure the seat back grab handle (Part #7891) to each seat support side post (Part #7882) on the outside of the seat post tubes at (Location H) with:

- (2)-  $\frac{1}{4}$ " x  $2\frac{1}{2}$ " hex head bolts,
- (4)-  $\frac{1}{4}$ " flatwashers,
- (2)-  $\frac{1}{4}$ " locknuts.

**Step 36.**

Place the Pod assembly onto the car at this time. Center the Pod on the cars floor and set the front of the Pods floor mount at 29" from the front edge of the rear body molding. Drill (4)-  $\frac{1}{32}$ " holes through the floormat, floor and sub floor frame using the holes in the Pods floor mounts as guides.

Attach Pod to the floor using Grade 8 bolts and using (2)- Flatbar Sub Floor Supports (Part#7885) under the sub floor for additional strength. Secure at the locations drilled with following:

- (4)-  $\frac{5}{16}$ " x  $1\frac{1}{2}$ " hex head bolts, (8)-  $\frac{5}{16}$ " flatwashers, (4)-  $\frac{1}{4}$ " locknuts, (2)- Sub Floor Supports (#7885).



TITLE:		
<b>RH080CCPRBOEFI INSTALLATION INSTRUCTIONS</b>		
DRAWN BY: R.HAERER	DATE: JAN 20, 2017	DWG NO. #7662
SHEET: 13 of 20	SCALE: Not To Scale	

**Step 37.** On the front pod cover (Part#7892), install FNR switch using original clips and fasteners. Attach front cover and FNR handle using factory connectors and connect wires.



**Step 38.** Place the front pod cover (Part#7892), up against the front of the seat support side post (Part #7882). Drill (6)-  $\frac{1}{8}$ " holes into the tube of the seat support side post using the holes in the front pod cover as guides. Secure the cover to the pod with:  
 (6)-  $\frac{1}{4}$ " x  $\frac{1}{4}$ " Pan Head Sheet Metal Screws,  
 (6)-  $\frac{1}{4}$ " flatwashers.

**Step 39.** Run FNR wires and shift cable up through  $1\frac{1}{2}$ " hole in floor. Connect wires and FNR cable. Adjust as needed.

**Step 40.** Place the pod side covers (Part#7894), up against the outside of the seat support side post (Part #7882). Drill (5)-  $\frac{1}{8}$ " holes into the tube of the seat support side post using the holes in the pod side covers as guides. Secure the side cover to the pod with:  
 (10)-  $\frac{1}{4}$ " x  $\frac{1}{4}$ " Pan Head Sheet Metal Screws,  
 (10)-  $\frac{1}{4}$ " flatwashers.

**Step 41.** Attaching a seat bottom to the Pod. If your seat bottom has the hip restraints already on the seat, remove the hip restraints. Set the seat bottom onto the middle pod frame. Place the hip restraints under the outside flatbars on the seat hat rack. Secure the hip restraints, flatbar and seat bottom together with the OEM bolts for the hip restraints.



TITLE:

**RH080CCPRBOEFI  
 INSTALLATION INSTRUCTIONS**

DRAWN BY: R.HAERER	DATE: JAN 20, 2017	DWG NO.  #7662
SHEET: 14 of 20	SCALE: Not To Scale	



**Step 42.** Install center tub support using factory connectors. Make sure the clip in the rear of the support attaches to the tub and bagwell plastic together.



**Step 43.** Install painted rear body using original fasteners.

Install the adhesive 36" kick trim strip onto the front of the rear body. Covering up the holes in the factory body. Trim as needed.



**Step 44.** Install cup holders, ignition switch and dash using factory connectors.

Install front cowl support, front cowl and cowl band using factory connectors.



TITLE:

**RH080CCPRBOEFI  
INSTALLATION INSTRUCTIONS**

DRAWN BY:

R.HAERER

DATE:

JAN 20, 2017

DWG NO.

#7662

SHEET:

15 of 20

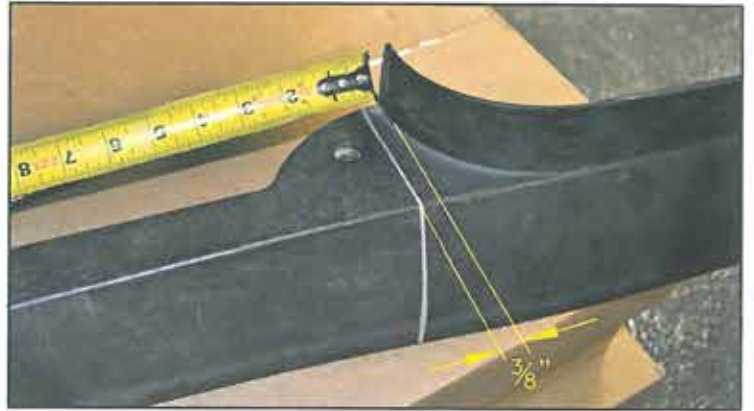
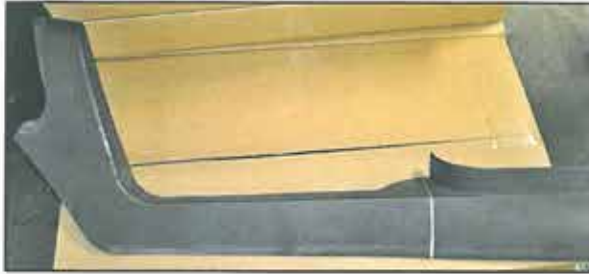
SCALE:

Not To Scale

**NOTE:** If installing the M & M side trim (#7896) continue on to Step 45.

If installing the matching custom plastic molded side trim (#PA1612), skip to next page now.

**Step 45.** Cut side trim in two. Measure  $\frac{3}{8}$ " from curve as shown. Use a square and mark a line perpendicular to the edge. Cut the trim in two on this line.



**Step 46.** Secure front and back trim pieces into factory locations with factory connectors.

**Step 47.** Install both side trims (Part #7896) to the car. (The rounded corner of side trim goes at rear of car.)

Position trim for best fit and drill (5)-  $\frac{9}{32}$ " holes using holes in side molding as guides.

Secure on both sides using:  
(10)-  $\frac{1}{4}$ " x 2" pan head bolts,  
(20)-  $\frac{1}{4}$ " flatwashers,  
(10)-  $\frac{1}{4}$ " locknuts.



TITLE:		
<b>RH080CCPRBOEFI INSTALLATION INSTRUCTIONS</b>		
DRAWN BY: R.HAERER	DATE: JAN 20, 2017	DWG NO. #7662
SHEET: 16 of 20	SCALE: Not To Scale	



**NOTE:** If installing the matching custom plastic molded side trim (#PA1612), use the steps below. If you installed the M & M side trim (#7896), skip this page.



**STEP 1:**

Remove (3)- OEM bolts at (Location A). Slide up the front leg cover. Remove the middle body if already installed.

**STEP 2:**

Install the plastic side trim (#PA1612) onto the car. Secure the side trim with the OEM bolts at (Location A). Tuck the front lip under the front leg cover before securing. Install the middle body as needed, on top of the new side trim.

**STEP 3:**

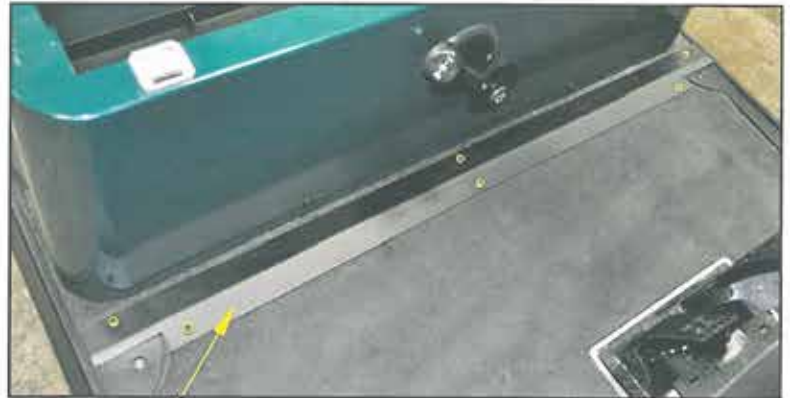
Secure the rear of the side trim to the car at (Location B), drill (3)-  $\frac{3}{32}$ " holes through trim and into car body. (1- in middle of rear floor, 2- at end of trim) Use (3)- push pins (#1010434) to secure side trim.

\*Repeat on other side.



TITLE: <b>RH080CCPRBOEFI INSTALLATION INSTRUCTIONS</b>		
DRAWN BY: R.HAERER	DATE: JAN 20, 2017	DWG NO. #7662
SHEET: 17 of 20	SCALE: Not To Scale	

**Step 48.** Place the floor mat threshold (Part #7895) over the seam between the original floor and the floor mat  $\frac{1}{2}$ " in front of the front body. Center side to side. Use the holes in the threshold as a guide and drill three (3)  $\frac{3}{8}$ " pilot holes in aluminum floor. Secure using six (6) black  $\frac{1}{4}$ " x  $1\frac{1}{4}$ " black pan head screws and six (6) black  $\frac{1}{4}$ " flat washers.



#7895

**Step 49.** Be sure that all wires are connected and connect battery, install rear seats and access panel.

**Step 50.** Re-install the cars OEM rear seat bottom and SAM or optional M&M rear seat kit / utility box.



TITLE:		
<b>RH080CCPRBOEFI INSTALLATION INSTRUCTIONS</b>		
DRAWN BY: R.HAERER	DATE: JAN 20, 2017	DWG NO. #7662
SHEET: 18 of 20	SCALE: Not To Scale	



# M&M VEHICLE CORP.

**4 Passenger Stretch Bolt-on Kit, GAS-EFI  
PART #PD080CCPRBOEFI  
CLUB CAR - PRECEDENT**



**No welding**

**Powder coated middle pod to match standard Club Car colors**



TITLE: <b>RH080CCPRBOEFI INSTALLATION INSTRUCTIONS</b>		
DRAWN BY: R.HAERER	DATE: JAN 20, 2017	DWG NO. #7662
SHEET: 19 of 20	SCALE: Not To Scale	

# M&M VEHICLE CORP.

## 4 Passenger Stretch Bolt-on Kit, GAS-EFI PART #PD080CCPRBOEFI CLUB CAR - PRECEDENT

### Bolt Kit

#### BLACK

- 4 - 5/16" x 1-3/4" truss head bolts
- 4 - 5/16" locknuts
- 2 - 1/4" x 2-1/2" hex head bolts
- 10 - 1/4" x 2" pan head bolts
- 24 - 1/4" x 1-1/4" PPHSMS
- 50 - 1/4" flatwashers
- 12 - 1/4" locknuts
- 2 - 6mm x 25mm hex head bolts

#### ZINC

- 3 - 5/16" x 1" truss head bolts
- 15 - 5/16" flatwashers
- 9 - 5-16" locknuts
- 2 - 1/4" x 1" hex head bolts
- 4 - 1/4" flat washers
- 4 - 1/4" locknuts
- 2 - 1/4" x 1" carriage bolts
- 4 - 1/4" flat washers
- 2 - 1/4" hexnuts (28 pitch)
- 2 - 1/4" lock washers
- 2 - #8x3/4" PPH self tapping screws

#### Grade 8

- 4 - 3/8" x 4" hex head bolts
- 8 - 3/8" x 3-1/2" hex head bolts
- 24 - 3/8" flatwashers
- 12 - 3/8" locknuts
- 4 - 5/16" x 1-1/2" hex head bolts
- 6 - 5/16" x 3-1/2" hex head bolts
- 20 - 5/16" flatwashers
- 10 - 5-16" locknuts

### Box Kit

- 1 - Bolt Kit
- 1 - Instructions
- 2 - Seat Support Post (PART #7882)
- 1 - Seat Rack Hat (PART #7886)
- 2 - Sub Floor Supports (PART #7885)
- 1 - Seat Back Grab Handle (PART #7891)
- 1 - Front Face Plate (PART #7892)
- 2 - Pod Side Covers (PART #7894)
- 1 - Frame rails D&P (PART #6597)
- 1 - Brake Rod (PART #6564)
- 1 - 4-7/8" x 36" kick trim
- 1 - Floor (PART #6558)
- 1 - Floor mat (Part #7080)
- 2 - PR side trim (PART #7896)
- 1 - Main Wireharness (PART #PA1614)
- 1 - FNR Wireharness (PART #PA1615)
- 2 - Ball stud (PART #1010954)
- 2 - Ball stud joint (PART #1012333)
- 1 - Throttle cable (PART #PA1489)
- 1 - Cable Stop Crimp
- 1 - FNR Shift cable (PART #PA1485)
- 1 - Shift cable bracket (PART #7183)
- 1 - Accelerator Cable Bracket (PART #1538)
- 2 - 6" Kick Mat
- 1 - Floor mat threshold (Part#7895)
- 2 - Outer sub floor D&P (Part #6583)
- 1 - Middle sub floor (Part #6582)
- 1 - Accelerator Pedal Wire Extension (Part#PA1617)
- 1 - Accelerator 3-Wire Extension (Part#PA1618)

#### Optional Side Trim & Threshold

- 2 - Side trim Plastic (#PA1612)(R&L)
- 6- Black Xmas Tree Push-Pins (#1010434)
- 1 - Floor mat threshold (Part#7453)

TITLE: <b>RH080CCPRBOEFI INSTALLATION INSTRUCTIONS</b>		
DRAWN BY: R.HAERER	DATE: JAN 20, 2017	DWG NO. #7662
SHEET: 20 of 20	SCALE: Not To Scale	