

REDHAWK
STRETCH BOLT-ON KIT
Part# RH080RXVBOG
Gas - E-Z-GO - RXV
INSTALLATION INSTRUCTIONS



| | | | | |
|-----------|--------------|---------|----------------------------------|--|
| TITLE: | | | RH080RXVBOG | |
| | | | INSTALLATION INSTRUCTIONS | |
| DRAWN BY: | DATE: | DWG NO. | | |
| R. HAERER | FEB 02, 2017 | # 7668 | | |
| SHEET: | SCALE: | | | |
| 1 of 15 | Not To Scale | | | |

Remove brake equalizer.



Save all factory bolts for later use.
Lubricate stainless steel fasteners.

STEP 1:

Remove the top from the car, and front & rear top supports.
Remove the seat bottom and seat back basket assembly.
Disconnect the battery.
Remove side trim pieces from the car.
Remove the rear body from the car.
Disconnect the F-N-R, Accelerator and Choke cables from the motor. (Save F-N-R cable springs & washers)
Remove the metal bracket that ties the plastic floor sides together, and battery.
Remove the gas tank and breather. (Cover breather inlet)

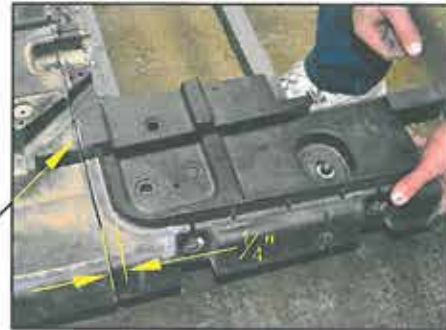
STEP 2:

Remove front cowl and dash assembly.
Remove the floor mat.
Remove the brake/accelerator cover.
Disconnect accelerator and remove accelerator cable.
Un-hook brake equalizer and disconnect brake pedal from accelerator pedal.
Remove brake equalizer and replace with PART #2580.
Remove brake cables.
Remove steering column to clear way to remove floor.
Remove plastic floor.
Replace steering column but do not tighten.
Remove all wire harness connections at the front of the car.
Be sure to label all connectors for re-assembly.
Move wire harness to the rear of the car.

Replace with PART #2580



Drivers Side



Rib stays w/front of car.



STEP 3:

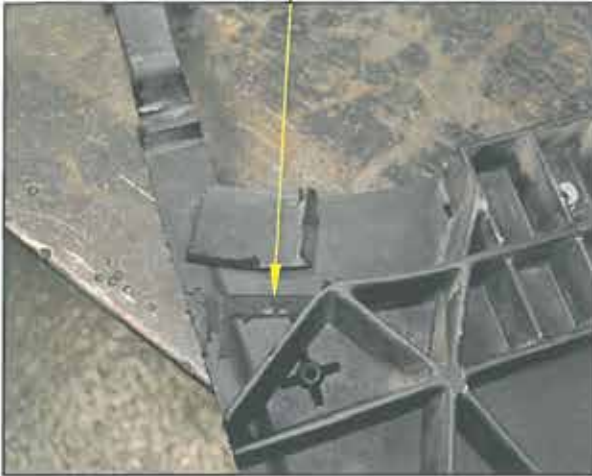
*** Cutting the floor ***

Mark a cutting line as shown.
Carefully cut the two rear pieces with a Saws All from the floor.



| | | |
|--|------------------------|-----------------------|
| TITLE: RH080RXVBOG INSTALLATION INSTRUCTIONS | | |
| DRAWN BY: R. HAERER | DATE: FEB 02, 2017 | DWG NO. # 7668 |
| SHEET: 2 of 15 | SCALE: Not To Scale | |

CUT



STEP 4:

Trim rib from under side of left and right floor pieces as shown.

CUT



STEP 5:

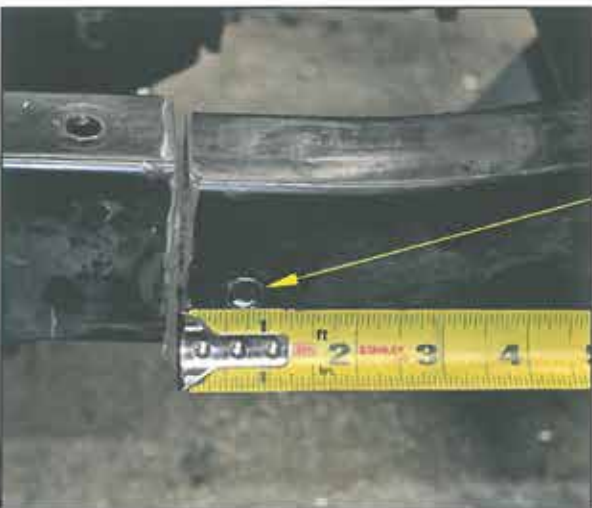
*** Cutting the car in half ***

Support the motor and frame with jack stands.

- Measure forward 5" from the front edge of body support angle & mark both sides of tube frame.
- Be sure that the mark is square with the chassis.
- Cut the 1" x 2" frame of the car on both sides with a Saws All.

The car will now be in two pieces.

After the car has been cut in half, grind both sides of the cut, making it smooth.



STEP 6:

Front half of frame. Measure back $\frac{3}{4}$ ", centered vertically and drill a $\frac{3}{8}$ " hole at location "A" (both sides).

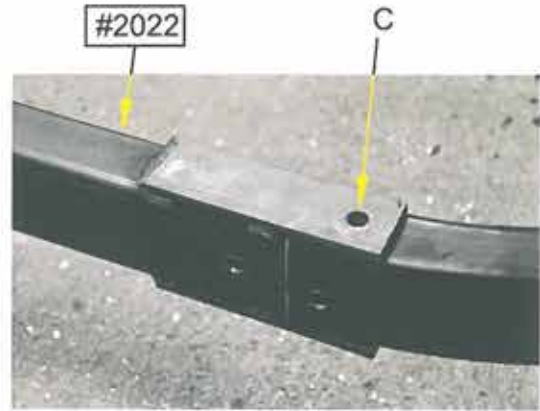


| | | |
|--|------------------------|-------------------|
| TITLE: | | |
| RH080RXVBOG INSTALLATION INSTRUCTIONS | | |
| DRAWN BY: R. HAERER | DATE: FEB 02, 2017 | DWG NO. # 7668 |
| SHEET: 3 of 15 | SCALE: Not To Scale | |



STEP 7:

Rear half of frame. Measure back 1", center and drill a $\frac{3}{8}$ " hole through the top of the frame at location "B" (both sides).



Tab slides into rear frame.

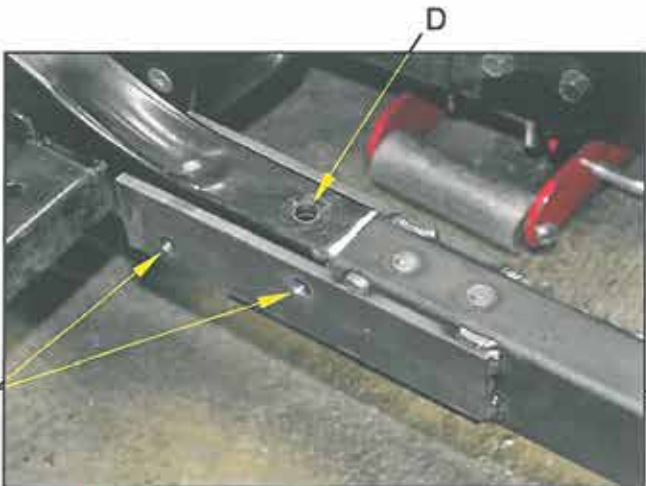


STEP 8:

Press frame extension (PART #2022) snug and in line with the front frame. Drill $\frac{3}{8}$ " hole at location "C" through frame (both sides). Assemble with two (2) $\frac{3}{8}$ "x4" grade 8 hex head bolts and four (4) $\frac{3}{8}$ " flat washers and two (2) $\frac{3}{8}$ " locknuts. Do not tighten.

Press frame extension (PART #2022) into with the rear frame. The top tab slides into the rear frame. Assemble at location "D" with two (2) $\frac{3}{8}$ "x4" grade 8 hex head bolts and four (4) $\frac{3}{8}$ " flat washers and two (2) $\frac{3}{8}$ " locknuts. Do not tighten.

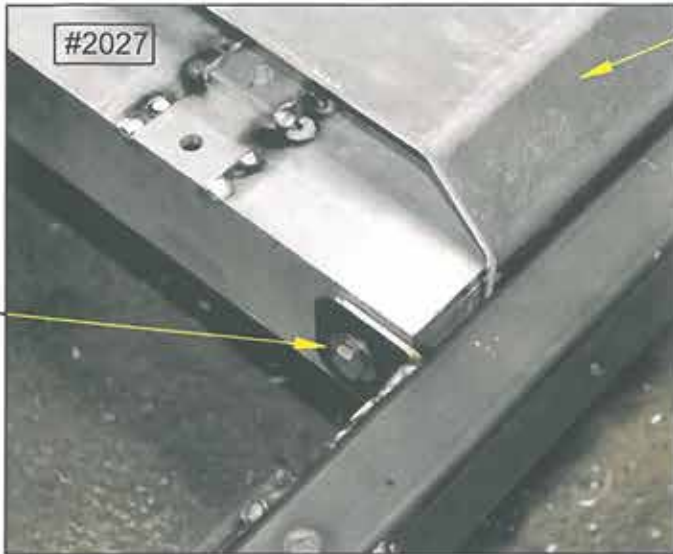
Drill $\frac{3}{8}$ " holes at location "E" through frame (both sides). Assemble with four (4) $\frac{3}{8}$ "x2 $\frac{3}{4}$ " grade 8 hex head bolts and eight (8) $\frac{3}{8}$ " flat washers and four (4) $\frac{3}{8}$ " locknuts. Do not tighten.



| | | |
|--|------------------------|-----------------------|
| TITLE: | | |
| RH080RXVBOG INSTALLATION INSTRUCTIONS | | |
| DRAWN BY: R. HAERER | DATE: FEB 02, 2017 | DWG NO. # 7668 |
| SHEET: 4 of 15 | SCALE: Not To Scale | |



#2012



STEP 9:

Place center frame (PART #2012) inside the frame. From the inside of the frame, insert two (2) $\frac{3}{8}$ "x3" grade 8 hex head bolts and two (2) $\frac{3}{8}$ " flat washers into front holes of the center frame. Insert two (2) $\frac{3}{8}$ "x2 $\frac{3}{4}$ " grade 8 hex head bolts and two (2) $\frac{3}{8}$ " flat washers into middle holes of the center frame to hold it in place.

Put the rear snubber angle (PART #2027) inside the center frame and secure it to the frame on both sides at location "F" with two (2) $\frac{5}{16}$ " x 1" grade 8 hex head bolts, four (4) $\frac{5}{16}$ " flat washers and two (2) $\frac{5}{16}$ " locknuts.

From the inside of the frame, insert two (2) $\frac{3}{8}$ "x3" grade 8 hex head bolts and two (2) $\frac{3}{8}$ " flat washers into the remaining front holes of the center frame. Insert two (2) $\frac{3}{8}$ "x3" grade 8 hex head bolts and two (2) $\frac{3}{8}$ " flat washers through $\frac{1}{4}$ " side supports of snubber angle and then into the last holes at the rear of the center panel. You should now have four bolts sticking out of each side of the frame.

#2013

Assemble the left and right side frame panels, (PART #2013 R&L) to the frame by sliding them over the exposed bolts and securing with eight (8) $\frac{3}{8}$ " flat washers, eight (8) $\frac{3}{8}$ " locknuts.

Make sure frame is level and square and **TIGHTEN ALL FRAME BOLTS AT THIS TIME.**

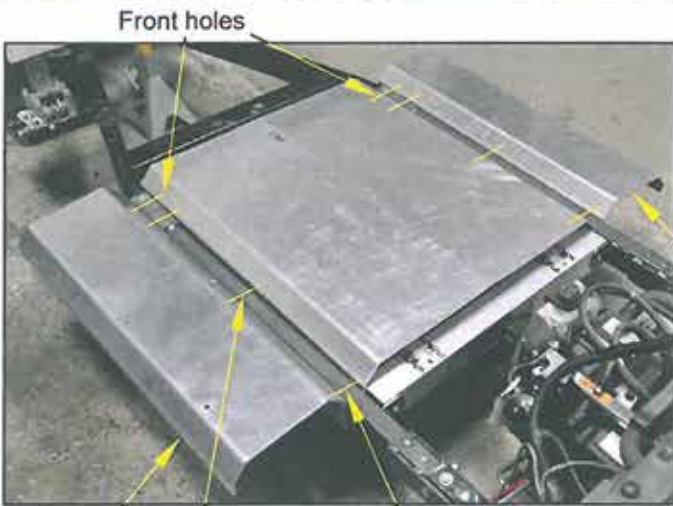
STEP 10:

Secure the snubber to the angle (PART #2027) using OEM fasteners at location "G".

Replace rear body support bracket (shown on page 8) at location "H" using two (2) $\frac{5}{16}$ " x 1 $\frac{1}{2}$ " hex head bolts, four (4) $\frac{5}{16}$ " flat washers and two (2) $\frac{5}{16}$ " locknuts.

Remove from jack stands and jacks.

#2027



#2013

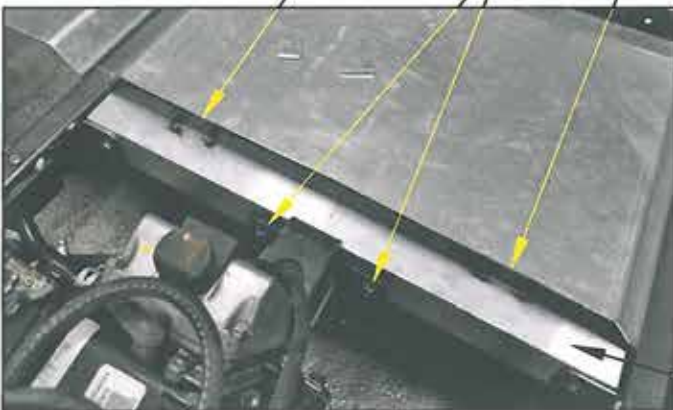
Middle holes
2 $\frac{3}{4}$ " bolts

Rear holes

H

G

H



| | | |
|--|------------------------|-----------------------|
| TITLE: RH080RXVBOG INSTALLATION INSTRUCTIONS | | |
| DRAWN BY: R. HAERER | DATE: FEB 02, 2017 | DWG NO. # 7668 |
| SHEET: 5 of 15 | SCALE: Not To Scale | |

#2584



STEP 11:

Re-attach front plastic floor using factory fasteners.

Re-attach accelerator/brake pedal linkage.

Position the front accelerator cable bracket (PART #2584) as shown (the top edge is flush with the access panel inset) and drill two (2) $\frac{9}{32}$ " holes using bracket as guide. Secure using two (2) $\frac{1}{4}$ "x1" hex head bolts, four (4) $\frac{1}{4}$ " flat washers and two (2) $\frac{1}{4}$ " locknuts.

Position the front brake cable bracket (PART #2583) as shown and drill three (3) $\frac{9}{32}$ " holes at rear of slots using bracket as guide. Secure using three (3) $\frac{1}{4}$ "x1" hex head bolts, six (6) $\frac{1}{4}$ " flat washers and three (3) $\frac{1}{4}$ " locknuts.

Note! The slots allow for brake adjustment.

TIGHTEN THE STEERING COLUMN.

Drill at rear of slots



#2583

STEP 12:

Lengthen the wire harness . Approximately 6 wires will be cut and lengthened using the provided 35" wires in wire harness (PART #2587).

Splice the wires 12" to the rear of the wire harness pigtail.

NOTE! DO NOT CUT ALL WIRES AT ONCE!

Wires of the same color should be extended one at a time to prevent crossing.

Stager the cuts over the middle length of the wire loom so that all of the butt connectors are not in the same place.

Match Car wire colors to harness colors using closest color match.

Conceal the wire extensions in the 35" piece of $\frac{1}{2}$ " wire loom provided.

Using remaining 4 wires provided plug the closest matching colors into the 4 FNR wires with matching spaded ends. Conceal the 20" section with remaining 20" of $\frac{1}{2}$ " loom provided. Run the new extended wires up the new frame channel into OEM locations in front plastic floor. Connect Accelerator wiring and drop the FNR wiring into floor between cars front plastic flooring and new center Aluminum Sub floor.

Accelerator/brake pedal linkage



| | | |
|--|--------------|---------------|
| TITLE: | | |
| RH080RXVBOG INSTALLATION INSTRUCTIONS | | |
| DRAWN BY: | DATE: | DWG NO. |
| R. HAERER | FEB 02, 2017 | # 7668 |
| SHEET: | SCALE: | |
| 6 of 15 | Not To Scale | |

STEP 13:

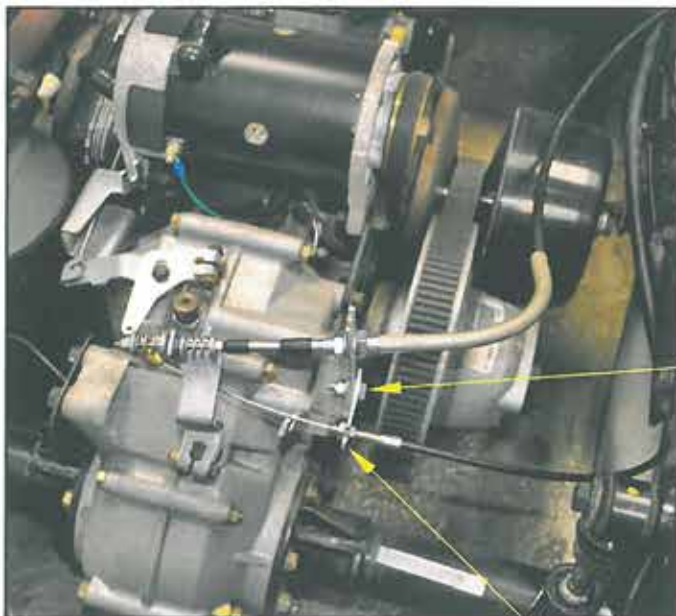
Modify rubber bushings (PART #PA1794) as shown and insert in factory brake cable guide. To protect new cables.

Attach brake (PART #101874601) and accelerator (PART #PA1489) cables at front of car. (Brake cable sleeved ends go to the rear of the car.)



Original bushing
#PA1794

Modified to protect brake cable.
(Modify two (2) bushings)



#2585

STEP 14:

Drill out hole in shifter bracket at location "J" to $\frac{9}{32}$ " and secure Throttle Bracket PART #2585 to the shifter bracket as shown using one (1) $\frac{1}{4}$ "x $\frac{3}{4}$ " hex head bolt, two (2) $\frac{1}{4}$ " flat washers and one (1) $\frac{1}{4}$ " lock nut.

Connect new accelerator and F-N-R cables to the engine. You will need the springs and washers you removed from the original F-N-R cable. Adjust Accelerator cable as needed.

Attach the brake cables to the rear brakes. Both brake cables run outside the frame, under the aluminum side frame panels. Adjust for best braking.

The F-N-R cable runs under center sub floor to front of the car.

Pull all excess brake cable to the rear of the car. Secure as required. The drivers side brake cable will form a loop in rear body.



| | | |
|--|------------------------|-----------------------|
| TITLE: RH080RXVBOG INSTALLATION INSTRUCTIONS | | |
| DRAWN BY: R. HAERER | DATE: FEB 02, 2017 | DWG NO. # 7668 |
| SHEET: 7 of 15 | SCALE: Not To Scale | |

Body support bracket

Accelerator cable



Rear floor panel

Brake cables run under outside frame panels



STEP 15:

Re-install front access panel using OEM fasteners.

Re-install two rear floor panels using OEM fasteners.

Sit the aluminum floor (PART #2014) in place. Holes go to the front of car and line up with the hole in center sub floor.



STEP 16:

Re-attach the gas tank to the car and connect fuel lines using original fasteners.

Re-attach rear fenders using OEM fasteners.

| | | |
|--|-------------------------------|------------------------------|
| TITLE: | | |
| RH080RXVBOG INSTALLATION INSTRUCTIONS | | |
| DRAWN BY: R. HAERER | DATE: FEB 02, 2017 | DWG NO. # 7668 |
| SHEET: 8 of 15 | SCALE: Not To Scale | |



STEP 17:

Re-attach the rear body and access panel to the car using original fasteners.

Re-attach cross bracket using original fasteners.



STEP 18:

Place rubber mat (PART #2573) on floor. Cut a hole to match hole in aluminum floor.

Re-attach front car mat using original fasteners.

STEP 19:

Re-install front dash and cowl. Re-install the wire harness to original locations in dash.



| | | |
|--|--------------|---------------|
| TITLE: | | |
| RH080RXVBOG INSTALLATION INSTRUCTIONS | | |
| DRAWN BY: | DATE: | DWG NO. |
| R. HAERER | FEB 02, 2017 | # 7668 |
| SHEET: | SCALE: | |
| 9 of 15 | Not To Scale | |



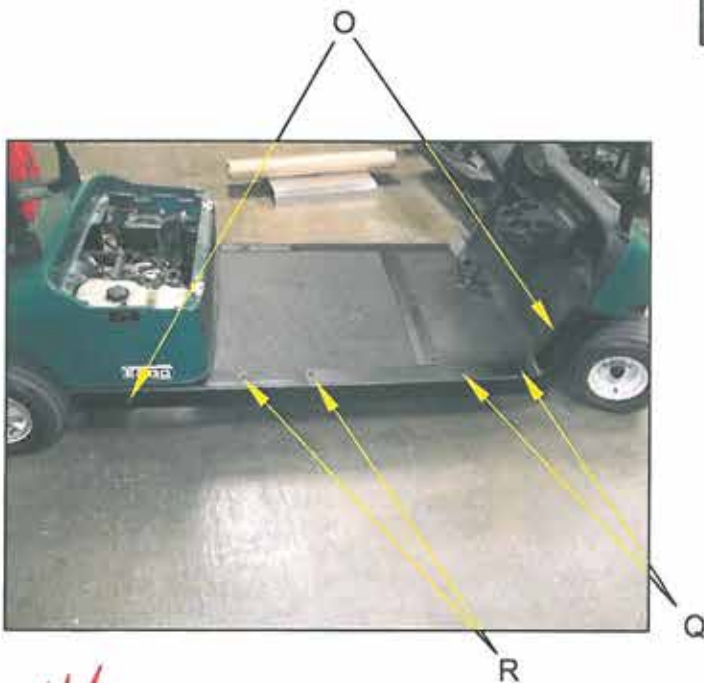
STEP 20:

Re-install battery. Do not connect until the entire car is re-assembled.

Re-install the breather.

STEP 21:

Install black kick mat (PART #2530) to cover holes left in the rear body.



STEP 22:

Replace the front and rear side trim sections onto the car. Hold the side sections in place using OEM tork bolts at Location "O".

STEP 23:

Place new side trim sections over top of the front and rear side trim sections on the car. Line up the front 2 holes in new trim with the 2 top holes in the cars front floor. Secure the new section and front trim section at Location "Q" with OEM front trim bolts. At the remaining holes in both new side trim and rear OEM side trim drill 4- $\frac{1}{8}$ " pilot holes using trim as guide Location "R" secure at Location "R" with 4- $\frac{1}{4}$ "x1 $\frac{1}{4}$ " PPH Sheet Metal Screws (ACG) & 4- $\frac{1}{4}$ " flat washers.



| | | |
|--|------------------------|-------------------|
| TITLE: | | |
| RH080RXVBOG INSTALLATION INSTRUCTIONS | | |
| DRAWN BY: R. HAERER | DATE: FEB 02, 2017 | DWG NO. # 7668 |
| SHEET: 10 of 15 | SCALE: Not To Scale | |



STEP 24:

Place Floor Mat Threshold #7998 over the seam where the cars 2 floor mats meet. Center Threshold between the new side trim sections and drill $3\frac{1}{8}$ " pilot holes through Aluminum flooring using holes in the threshold as a guide. Secure threshold to flooring @ all Locations using $6\frac{1}{4}$ "x $1\frac{1}{4}$ " PPH Sheet Metal Screws (ACG) & $6\frac{1}{4}$ " flat washers.



STEP 25:

Remove Hip restraints from new RXV front seat bottom, (Not provided in Kit) Save all bolts.

STEP 26:

Bolt together the middle pod. Secure Seat Hat Rack #7983 to each seat support post #7993 at Location "H" Using: $4\frac{5}{16}$ "x $1\frac{3}{4}$ " Truss head bolts, $4\frac{5}{16}$ " Locknuts.



STEP 27:

With large holes pointing to the outside attach the seat back bracket #8001 to each side post. Counter sunk hole goes in line with top hole on each seat post. Use $4\frac{1}{4}$ "x $1\frac{3}{4}$ " PPH (ACG) bolts, do not secure.



STEP 28:

On the back side of support posts place the grab handle (PART#7986) onto the back side of the $\frac{1}{4}$ " PPH (ACG) bolts and secure in place using $4\frac{1}{4}$ " (ACG) flat washers, & $4\frac{1}{4}$ " (ACG) locknuts.

STEP 29:

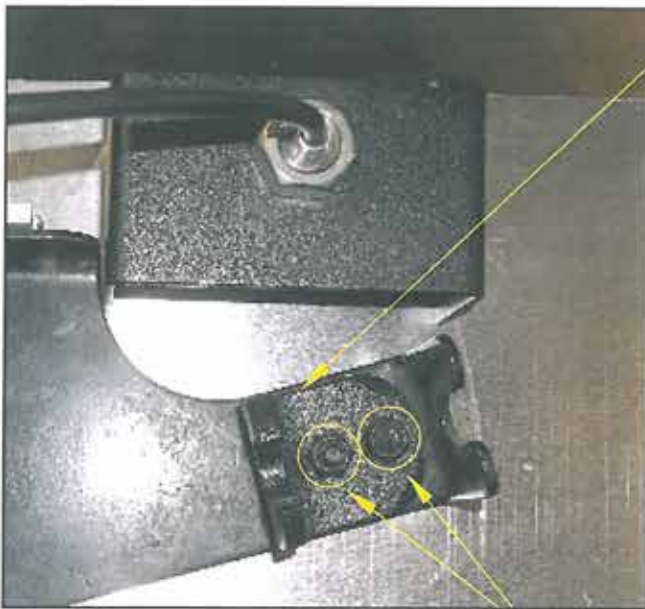
Place new RXV seat back (Not provided) onto the outer holes of seat back bracket (PART#8001) Secure seat back in place using 4 of the OEM bolts removed from seat bottom in Step 25.

| | | |
|--|------------------------|-------------------|
| TITLE: | | |
| RH080RXVBOG INSTALLATION INSTRUCTIONS | | |
| DRAWN BY: R. HAERER | DATE: FEB 02, 2017 | DWG NO. # 7668 |
| SHEET: 11 of 15 | SCALE: Not To Scale | |



STEP 30:

Place new POD assembly onto car with front edge of POD floor mounts approximately 27" from front of rear body center POD on flooring. Drill 4- $\frac{1}{32}$ " holes through floor using POD floor mounts as guide. Place sub floor supports under center sub floor and bolt POD in place through mounts, floor, and supports using: 4- $\frac{5}{16}$ "x $\frac{1}{2}$ " (Grade 8) hex head bolts, 8- $\frac{5}{16}$ " (Grade 8) flat washers, and 4- $\frac{5}{16}$ " locknuts.



#2528

STEP 31:

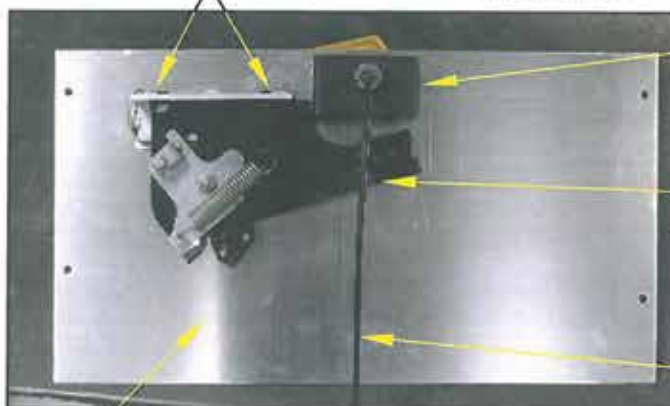
Place new F-N-R cable mount bracket PART #2528 onto OEM F-N-R selector switch assembly. Mark hole locations and drill two (2) $\frac{9}{32}$ " holes in F-N-R switch plate. Secure new mount bracket on switch assembly using two (2) $\frac{1}{4}$ "x $\frac{3}{4}$ " hex head bolts, four (4) $\frac{1}{4}$ " flat washers and two (2) $\frac{1}{4}$ " locknuts at Location "I".

STEP 32:

Place F-N-R selector assembly onto back of face plate #7996 attach through F-N-R mounting angle using OEM bolts saved earlier at Location "J".

STEP 33:

Remove clevis end from new choke cable (PART #PA1513). Run the choke cable through the front of face plate (PART #7996).



Location "J"

Location "I"

#2527

#2528

#1513

#7996

Slide aluminum choke bracket (PART #2527) onto cable and secure in place using M14 x 2.0 Hex Nut Provided In Kit.

Run the new choke cable into the hole in flooring under the cars center sub floor and into the rear body near the wire loom location.

Re-install choke cable clevis end and cable @ all OEM Locations, Using Clevis Pin with keeper Pin Provided (IF NEEDED).

| | | |
|--|------------------------|---------------|
| TITLE: | | |
| RH080RXVBOG INSTALLATION INSTRUCTIONS | | |
| DRAWN BY: R. HAERER | DATE: FEB 02, 2017 | DWG NO. |
| SHEET: 12 of 15 | SCALE: Not To Scale | # 7668 |



Step 34:

Run new F-N-R cable up through the floor and attach to new mounting bracket and F-N-R selector assembly. Adjust cable as needed. Run F-N-R wiring up through floor and install @ OEM Locations.

STEP 35:

Place front POD cover (PART#7996) against the front of the seat support posts (PART #7993) drill 4- $\frac{3}{8}$ " holes in posts using cover as a guide. Secure POD cover in place Using: 4- $\frac{1}{4}$ "x $\frac{1}{4}$ " PPH sheet metal screws (ACG), 4- $\frac{3}{4}$ " flat washers.

Step 36:

Place the pod side covers (Part#7894), up against the outside of the seat support post (Part #7993). Drill (5)- $\frac{1}{8}$ " holes into the tube of the seat support side post using the holes in the pod side covers as guides. Secure the side cover to the pod with: (10)- $\frac{1}{4}$ " x $\frac{1}{4}$ " Pan Head Sheet Metal Screws, (10)- $\frac{1}{4}$ " flatwashers.

STEP 37:

Place new RXV seat bottom onto Seat Hat Rack with restraints on bottom side of frame bolt through restraints and frame into seat bottom, Using: 8- 10mm x 40mm x 1.5 Hex Head Bolts, 8- $\frac{3}{8}$ " Lock Washers.



STEP 38:

Re-connect Battery

Re-install the basket assembly OR install your new M&M rear seat kit or box to the car.

Re-install the rear seat bottom and rear seat back to the car.

Tie all cables and wiring up and away from any moving parts as needed.



| | | |
|--|--------------|---------------|
| TITLE: | | |
| RH080RXVBOG INSTALLATION INSTRUCTIONS | | |
| DRAWN BY: | DATE: | DWG NO. |
| R. HAERER | FEB 02, 2017 | # 7668 |
| SHEET: | SCALE: | |
| 13 of 15 | Not To Scale | |

REDHAWK

4-PASSENGER STRETCH BOLT-ON

Part# RH080RXVBOG

Gas - E-Z-GO - RXV

BOLT KIT

Grade 8

- 4- $\frac{3}{8}$ "x 4" HEX HEAD BOLTS -Grade 8
- 6- $\frac{3}{8}$ "x 3" HEX HEAD BOLTS -Grade 8
- 6- $\frac{3}{8}$ "x $2\frac{3}{4}$ " HEX HEAD BOLTS -Grade 8
- 32- $\frac{3}{8}$ " FLATWASHERS -Grade 8
- 16- $\frac{3}{8}$ " LOCKNUTS -Grade 8
- 4- $\frac{5}{16}$ "x $1\frac{1}{2}$ " HEX HEAD BOLTS -Grade 8
- 8- $\frac{5}{16}$ " FLATWASHERS -Grade 8
- 4- $\frac{5}{16}$ " LOCKNUTS -Grade 8

SS

- 2- $\frac{5}{16}$ "x $1\frac{1}{2}$ " HEX HEAD BOLTS -SS
- 2- $\frac{5}{16}$ "x 1" HEX HEAD BOLTS -SS
- 6- $\frac{5}{16}$ " FLAT WASHERS -SS
- 4- $\frac{5}{16}$ " LOCKNUTS -SS
- 5- $\frac{1}{4}$ "x 1" HEX HEAD BOLTS -SS
- 3- $\frac{1}{4}$ "x $\frac{3}{4}$ " HEX HEAD BOLTS -SS
- 16- $\frac{1}{4}$ " FLAT WASHERS -SS
- 8- $\frac{1}{4}$ " LOCKNUTS -SS
- 8- 10mm x 40mm x 1.5 HEX HEAD BOLTS -SS
- 8- $\frac{3}{8}$ " LOCK WASHERS -SS
- 1- M14 x 2.0 HEX NUT (Choke cable Nut)

ACG

- 4- $\frac{5}{16}$ "x $1\frac{3}{4}$ " TRUSS HEAD BOLTS - ACG
- 4 - $\frac{5}{16}$ " LOCKNUTS - ACG
- 4 - $\frac{1}{4}$ "x $1\frac{3}{4}$ " PPH BOLTS - ACG
- 24 - $\frac{1}{4}$ "x $1\frac{1}{4}$ " PPH SHEET METAL SCREWS - ACG
- 28 - $\frac{1}{4}$ " FLAT WASHERS -ACG
- 4 - $\frac{1}{4}$ " LOCKNUTS -ACG

2- RUBBER BUSHING (PART #PA1794)

1- BRAKE CABLE CLEVIS PIN (PART #1010829) with KEEPER PIN



| | | |
|--|-------------------------------|--------------------------|
| TITLE: RH080RXVBOG INSTALLATION INSTRUCTIONS | | |
| DRAWN BY: R. HAERER | DATE: FEB 02, 2017 | DWG NO. # 7668 |
| SHEET: 14 of 15 | SCALE: Not To Scale | |

REDHAWK

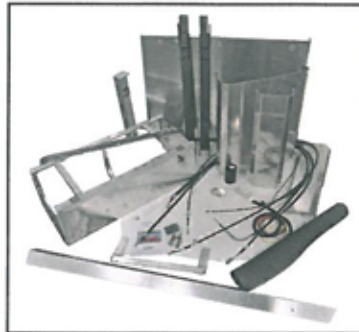
4-PASSENGER STRETCH BOLT-ON

Part# RH080RXVBOG

Gas - E-Z-GO - RXV

COMPLETE BOX KIT

- 1 - BOLT KIT
- 1 - INSTRUCTIONS
- 1 - WIRE HARNESS KIT (PART #2587)
- 1 - FLOOR MAT (PART #2573)
- 2 - STEEL FRAME TUBES R&L (PART #2022)
- 1 - ALUMINUM MID SUB FLOOR (PART #2012)
- 2 - ALUMINUM OUTER SUB FLOORS (PART #2013)
- 2 - SIDE TRIM R&L (PART #2586)
- 1 - ALUMINUM FLOOR (PART #2014)
- 1 - ALUMINUM SNUBBER ANGLE (PART #2027)
- 1 - FRONT F-N-R HOLDER (PART #2528)
- 1 - FRONT BRAKE CABLE HOLDER (PART #2583)
- 1 - FRONT ACCELERATOR CABLE HOLDER (PART #2584)
- 1 - REAR ACCELERATOR CABLE HOLDER (PART #2585)
- 1 - BLACK KICK MAT (PART #2530)
- 1 - BRAKE EQUALIZER (PART #2580)
- 1 - ALUMINUM CHOKE BRACKET (PART #2527)
- 1 - F-N-R CABLE (PART #PA1511)
- 1 - CHOKE CABLE (PART #PA1513)
- 1 - ACCELERATOR CABLE (PART #PA1489) *Modified*
- 2 - BRAKE CABLE (PART #101874601)
- 1 - THRESHOLD (PART#7998)
- 1 - SEAT HAT RACK (PART#7983)
- 2 - SEATSUPPORT POST (PART#7993)
- 2 - SEAT BACK BRACKETS (PART#8001)
- 1 - GRAB HANDLE (PART#7986)
- 2 - SUB FLOOR SUPPORTS (PART#7885)
- 1 - GAS FACE PLATE (PART#7996)
- 2 - SIDE COVERS (PART#7894)



| | | |
|----------------------------------|--------------|---------------|
| TITLE: | | |
| RH080RXVBOG | | |
| INSTALLATION INSTRUCTIONS | | |
| DRAWN BY: | DATE: | DWG NO. |
| R. HAERER | FEB 02, 2017 | # 7668 |
| SHEET: | SCALE: | |
| 15 of 15 | Not To Scale | |