

**REDHAWK**  
**4-PASSENGER STRETCH BOLT-ON**  
**Part# RH080YDRBOE**  
**Electric / AC - YAMAHA - YDR**  
**INSTALLATION INSTRUCTIONS**



TITLE:		
RH080YDRBOE INSTALLATION INSTRUCTIONS		
DRAWN BY:	DATE:	DWG NO.
R.HAERER	FEB 16, 2017	# 7665-1
SHEET:	SCALE:	
1 of 15	Not To Scale	

**STEP 1**



\* Some Photos Used may be of Gas Vehicles NOT Electric.  
\* Save all bolts and factory connectors for reuse.

**STEP 1:**

- Place car in Tow Mode.
- Remove the Top from the car, along with the Front Legs.
- Remove the Seat Bottom & Seat Backs.
- Remove Rear Basket Assembly with the Rear Legs.
- Remove Dash Cup Holder Panel.
- Remove the Floor mat.

**STEP 2**



**STEP 2:**

- Disconnect all wires.
- Remove Dash Glove Box Assembly.
- Remove Side Trim.
- Remove all the bolts holding the Rear Body on and remove the RearBody from the car.

**STEP 3**



**STEP 3:**

- Disconnect and remove the Batteries & Tie Downs.
- Remove Charger Port from Frame.

TITLE:		
RH080YDRBOE INSTALLATION INSTRUCTIONS		
DRAWN BY:	DATE:	DWG NO.
R.HAERER	FEB 16, 2017	# 7665-1
SHEET:	SCALE:	
2 of 15	Not To Scale	

**STEP 4:**  
Remove Both Battery Tie Down Braces from Frame.

**STEP 5:**  
Disconnect the Accelerator Pedal & Brake Pedal Wires.  
Pull the wireharness from the front cowl back through the floor all the way back to the motor.  
Remove Brake Cable from Car.  
Remove Hex Head Bolts holding the plastic floor down to the frame.

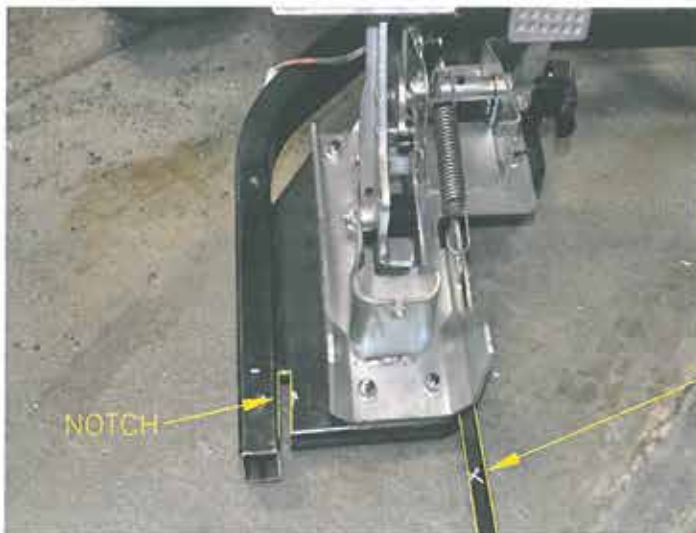
**STEP 6:**  
Remove 4 bolts on Steering Column.  
Lay Column over to the side out of the way of Plastic Floor.



**STEP 4**



**STEP 6**



**STEP 7**

**STEP 7:**  
Remove the Plastic Floor from the car.  
The Accelerator & Brake Pedal Assembly remove with the plastic floor.

**\*2012 & UP Cars see 7a**

**STEP 7a:**  
If pedals stay attached to frame:  
Remove pedal assembly support Angle from frame of car.

Notch Assembly next to frame 1¼" wide x 2½" deep.

TITLE: <b>RH080YDRBOE INSTALLATION INSTRUCTIONS</b>		
DRAWN BY: R.HAERER	DATE: FEB 16, 2017	DWG NO. # 7665-1
SHEET: 3 of 15	SCALE: Not To Scale	

**STEP 8**



**STEP 8:**

Mark  $\frac{1}{4}$ " in front of the channel for the rear body.

Cut the Plastic Floor on the marked line.

Cutting the Floor in half.

Trim back all plastic braces under floor after cutting in half.

**STEP 9**



**STEP 9:**

From the engine side of the front crossbar mount, measure 5" and mark on both sides of the frame.

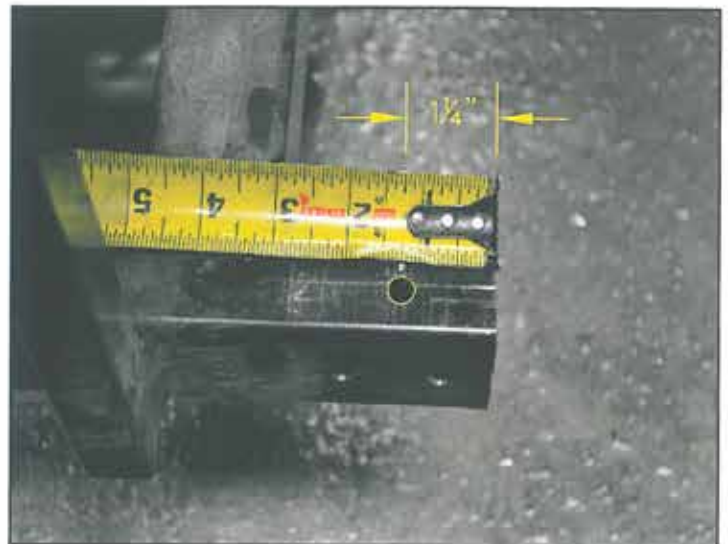
Use Jack Stands to hold both the front half and rear half of the car up.

Make sure your marks are square and cut the frame in half.

Note: If your car has 1"x1" Sq. Tube Frame Gussets, you will need to cut them out. Then grind the frame down smooth.

**STEP 10:**

On the Rear side of the cut frame, measure back from the cut  $\frac{1}{4}$ ", Drill (1)-  $\frac{1}{32}$ " hole down through both sides of the tube. Repeat for other side.



**STEP 10**



TITLE:		
RH080YDRBOE INSTALLATION INSTRUCTIONS		
DRAWN BY:	DATE:	DWG NO.
	FEB 16, 2017	# 7665-1
SHEET:	SCALE:	
4 of 15	Not To Scale	

**STEP 11:**

Install the Frame Tubes (Part#6901) & (Part#6903) to the front half of the cut car.

Slide on the Frame Tubes.

The Frame Tubes have Tabs welded on the inside, the Tabs go on the bottom. (Front & Rear should be marked.)

Line the top hole up with the factory hole in the frame.

Drill (1)- $\frac{1}{32}$ " hole through the top frame hole through all frame tubing, using the top holes as guides.

Repeat for other side.

Place (2)- $\frac{5}{16}$ " x  $3\frac{1}{2}$ " Hex Head Bolts Gr8,  
(2)- $\frac{5}{16}$ " Flatwashers, into the frame to hold in place.  
Do NOT secure at this time!



**STEP 11**

The  $\frac{1}{2}$ " Angle goes on Drivers Front Frame Side and slides under Pedal Assembly for Support.

**STEP 12:**

Slide the Rear of the Frame Tubes onto the rear half of the car. (Using a ratchet strap down the center of the frame is recommended.)

Line up the top holes, drill a  $\frac{1}{32}$ " hole through the top frame hole again through all frame tubing.

Place (2)- $\frac{5}{16}$ " x 3" Hex Head Bolts Gr8,  
(4)- $\frac{5}{16}$ " Flatwashers, (2)- $\frac{5}{16}$ " Locknuts.

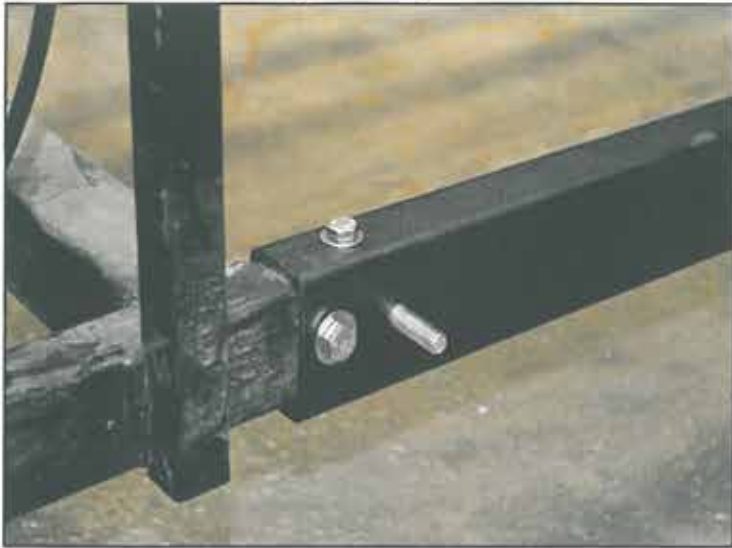


**STEP 12**



TITLE:		
RH080YDRBOE INSTALLATION INSTRUCTIONS		
DRAWN BY:	DATE:	DWG NO.
R.HAERER	FEB 16, 2017	# 7665-1
SHEET:	SCALE:	
5 of 15	Not To Scale	

## REAR



## FRONT



STEP 13

### STEP 13:

Square up & level the new Frame tubes with the old frame. Drill (2)-  $\frac{13}{32}$ " holes in the sides at each corner of the frame. Use the holes in the Frame tubes as guides. At the front of the frame in both side holes secure with:

(4)-  $\frac{3}{8}$ " x 2" Hex Head Bolts (Grade 8), (8)-  $\frac{3}{8}$ " Flatwashers, (4)-  $\frac{3}{8}$ " Locknuts.

At the rear of the frame secure in the back hole only: (2)-  $\frac{3}{8}$ " x 2" Hex Head Bolts (Grade 8), (4)-  $\frac{3}{8}$ " Flatwashers, (2)-  $\frac{3}{8}$ " Locknuts. Use (2)-  $\frac{3}{8}$ " x  $2\frac{3}{4}$ " Hex Head Bolts (Grade 8), (2)-  $\frac{3}{8}$ " Flatwashers, at the rear front holes. Feed those bolts from the inside out. Do NOT secure these at this time!

### STEP 14:

Remove the (2)- Top Bolts from the front of the frame tubes. Place the front part of the plastic floor onto the car at this time.

Re-install the (2)- Top Bolts through the plastic and through the frame. You may need to drill out the plastic for the bigger bolts. Secure using:

(2)-  $\frac{5}{16}$ " Flatwashers, (2)-  $\frac{5}{16}$ " Locknuts. (Grade 8)

\*Make Sure Plastic misses all Bolt Heads in Frame, Trim if Needed.

Re-install all bolts in front Plastic.

Re-install Steering Column.



STEP 14

### STEP 14a

On cars older than 2012, Replace factory bolts with 4-8mmx30mm S.S. Hex Head Bolts and 4-  $\frac{5}{16}$ " S.S. Lock Washers. Start all 4 bolts then slide steering spacer (Part #4130) into place at front edge of column plate and secure all 4 bolts in place. Do Not Over Tighten.

\*This Step will allow the driver more loading clearance.

TITLE:		
RH080YDRBOE INSTALLATION INSTRUCTIONS		
DRAWN BY:	DATE:	DWG NO.
R.HAERER	FEB 16, 2017	# 7665-1
SHEET:	SCALE:	
6 of 15	Not To Scale	

**STEP 15:**

Re-install the rear plastic floor to the car.  
Make sure Plastic Sits Down & Misses all Frame Bolts.  
Secure to the frame with the (4)- Factory Bolts.  
Replace Battery Tie Down Braces.



**STEP 15**

**STEP 16:**

Remove the (2)- Rear Side Bolts that were put in from the inside the frame pointing out.

Place the Middle Floor Frame (Part#6904) between the two Frame Rails.  
Front will be Marked.

Insert all bolts from the inside the frame pointing out.  
Connecting the frame floor to the frame rails by replacing the (2)- rear side bolts and with:  
(4)-  $\frac{3}{8}$ " x  $2\frac{3}{4}$ " Hex Head Bolts,  
(4)-  $\frac{3}{8}$ " Flatwashers.

Do NOT secure at this time!

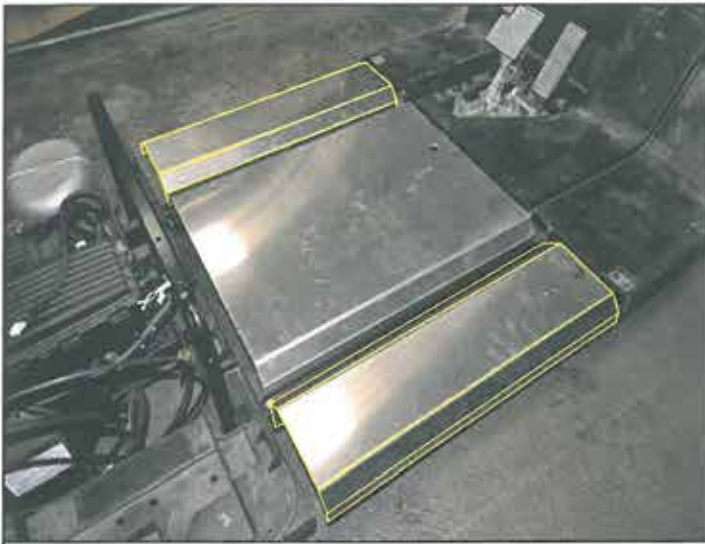


**STEP 16**



TITLE:		
RH080YDRBOE INSTALLATION INSTRUCTIONS		
DRAWN BY:	DATE:	DWG NO.
R.HAERER	FEB 16, 2017	# 7665-1
SHEET:	SCALE:	
7 of 15	Not To Scale	

**STEP 17**



**STEP 17:**

Install the Side Floor Frames (Part#6905) to the outside of the Frame Rails. Secure them to the (3) Bolts sticking out of each side.

Secure with (6)- 3/8" Gr8 Flatwashers, (6)- 3/8" Gr8 Locknuts.

Remove the jack stands from the car at this time.

**STEP 18**



**STEP 18:**

Cut the factory wire harness were shown.

Use the Wire Harness (Part#6917) to stretch the OEM wireharness. Re-loom the wires.

Re-Install Batteries but Do Not make final Connections to power Car,  
Re-Install Charger Port & Re-connect Wires.

\*Not all wires will be used on every model. Remove excess wires or tuck them into the wireloom.

**STEP 19**



**STEP 19:**

Re-attach any wire connections you disconnected at the rear of the car.

Run the new extended Wire Harness down the drivers side channel on top of the new frame .

Attach the Wire Harness to the plastic floor in OEM postions. Run the Wire Harness into the access panel in the front plastic floor behind the Brake and Accelerator Pedal and through the hole into the front cowl of the car.

Re-attach the Accelerator Pedal & Brake Pedal connections.

TITLE:		
RH080YDRBOE INSTALLATION INSTRUCTIONS		
DRAWN BY:	DATE:	DWG NO.
R.HAERER	FEB 16, 2017	# 7665-1
SHEET:	SCALE:	
8 of 15	Not To Scale	



**STEP 20**



**STEP 20:**

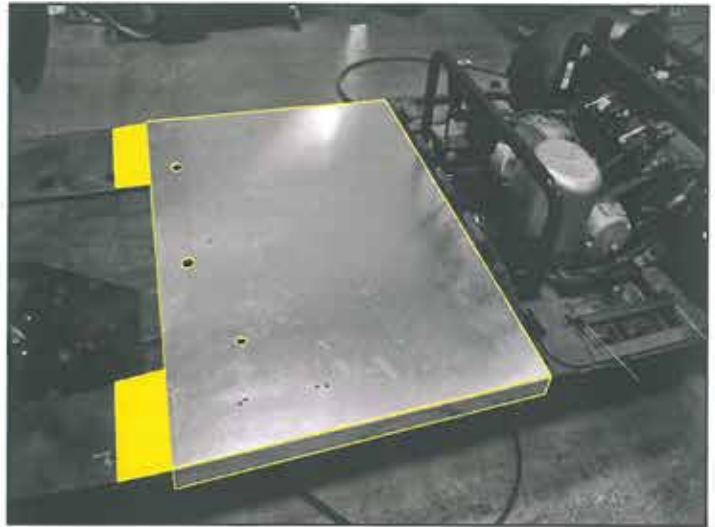
Install New Brake Cable (Part#1593) to O.E.M. Brake Bracket in rear. Run Cable to Front of Car down the Middle Section Under the Sub Floor. Re-attach at Factory location in front using Original Hardware.

**STEP 21:**

Lay the Floor Cover (Part#6906) on the car. Line up holes in floor cover with sub floor holes at front.

Adjust the Rear Plastic Floor for the best fit and tighten the (4) bolts holding it down.

Cover outer edge where Aluminum Floor & Factory Floor meet with 2- 4 $\frac{3}{4}$ "x6" pieces of Kick Mat, Part#5988 One each side, Trim to fit.



**STEP 21**

**STEP 22:**

Cut Side Trim, Measure 1" & Cut Trim Square. Re-Install front half of trim to car at original location with OEM screws.



**STEP 22-23**

**STEP 23:**

Re-Install Glove Box Dash Assembly. Re-attach the wiring connections inside the dash to the Ignition Switch, & Back Up Buzzer wires. Re-Install the Dash Cup Holder Panel. Re-Install the Floor Access Cover Panel.



TITLE:		
RH080YDRBOE INSTALLATION INSTRUCTIONS		
DRAWN BY:	DATE:	DWG NO.
R.HAERER	FEB 16, 2017	# 7665-1
SHEET:	SCALE:	
9 of 15	Not To Scale	

**STEP 24:**

With all Wires Attached Connect Batteries,  
Make sure car will move,  
Carefully Test Wiring & Brake Adjustment.

**STEP 25:**

Re-Install the Front Factory Floormat with the factory fasteners. Put the steering column cover back into place. Install the Middle Floor Mat (Part#6907), adjust the mat for the best fit, Trim outer edge.



**STEP 25**

**STEP 26:**

Re-Install the Rear Body Cover back onto the car.  
Re-Install Rear Half Factory Side Trim.

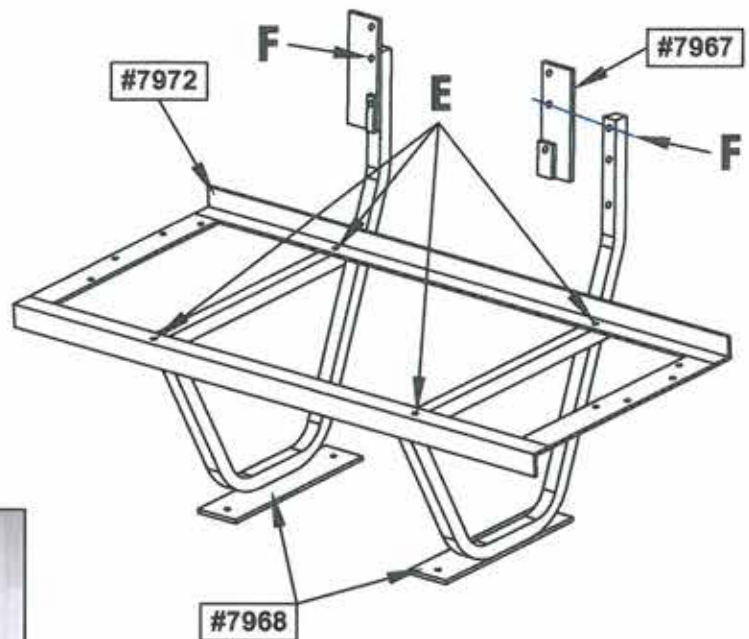
**STEP 27:**

Bolt together the middle pod.  
Secure the seat hat rack (Part #7972) to each seat support side post (Part #7968) at (Location E) using:  
(4)- 5/16" x 1 3/4" truss head bolts, (4)- 5/16" locknuts.

**STEP 28:**

Secure the seat back bracket (R&L)(Part#7967) to each seat support side post (Part #7882) at (Location F) using:  
(2)- 5/16" x 1 3/4" truss head bolts,  
(2)- 5/16" flatwashers, (2)- 5/16" locknuts.

\*Note: truss head bolt goes on front side of bracket.



**STEP 29:**

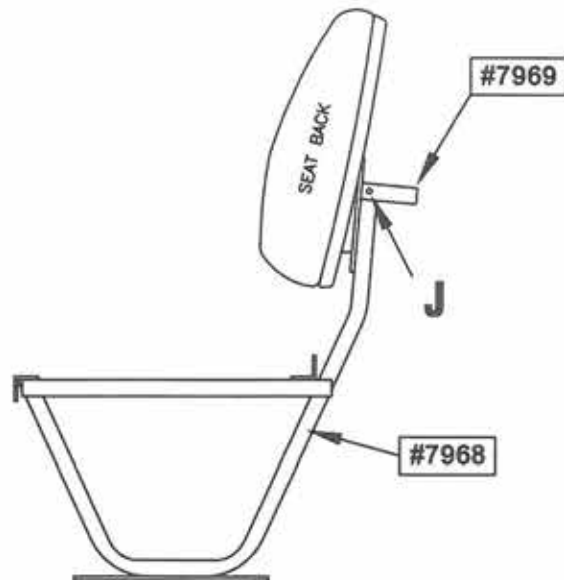
Secure the seat back to each seat support side post (Part #7882) & seat back bracket (Part#7967).  
At top (Location G) using:  
(2)- 6mm x 25mm hex head bolts,  
(2)- 1/4" flatwashers, 1/4" lockwashers.  
Secure seat back at bottom (Location H) using:  
(2)- 6mm x 50mm hex head bolts,  
(2)- 1/4" flatwashers, 1/4" lockwashers.

TITLE:		
RH080YDRBOE INSTALLATION INSTRUCTIONS		
DRAWN BY: R.HAERER	DATE: FEB 16, 2017	DWG NO.
SHEET: 10 of 15	SCALE: Not To Scale	# 7665-1

**STEP 30:**

Secure the seat back grab handle (Part #7969) to each seat support side post (Part #7968) on the outside of the seat post tubes at (Location J) with:

- (2)-  $\frac{1}{4}$ " x  $1\frac{3}{4}$ " hex head bolts,
- (2)-  $\frac{1}{4}$ " flatwashers,



**STEP 31:**

Place the Pod assembly onto the car at this time. Center the Pod on the cars floor and set the front of the Pods floor mount at 28" from the front edge of the rear body molding. Drill (4)-  $\frac{1}{32}$ " holes through the floormat, floor and sub floor frame using the holes in the Pods floor mounts as guides.

Attach Pod to the floor using Grade 8 bolts and using (2)- Flatbar Sub Floor Supports (Part#7885) under the sub floor for additional strength. Secure at the locations drilled with following:

- (4)-  $\frac{5}{16}$ " x  $1\frac{3}{4}$ " hex head bolts, (8)-  $\frac{5}{16}$ " flatwashers, (4)-  $\frac{1}{4}$ " locknuts, (2)- Sub Floor Supports (#7885).



TITLE: RH080YDRBOE INSTALLATION INSTRUCTIONS		
DRAWN BY: R.HAERER	DATE: FEB 16, 2017	DWG NO. # 7665-1
SHEET: 11 of 15	SCALE: Not To Scale	

**STEP 32:**

Place the front pod cover (Part#7978), up against the front of the seat support side post (Part #7968). Drill (6)- 1/8" holes into the tube of the seat support side post using the holes in the front pod cover as guides. Secure the cover to the pod with: (6)- 1/4" x 1 1/4" Pan Head Sheet Metal Screws, (6)- 1/4" flatwashers.

**STEP 33:**

Place the pod side covers (Part#7894), up against the outside of the seat support side post (Part #7968). Drill (5)- 1/8" holes into the tube of the seat support side post using the holes in the pod side covers as guides. Secure the side cover to the pod with:

(10)- 1/4" x 1 1/4" Pan Head Sheet Metal Screws,  
(10)- 1/4" flatwashers.

**STEP 34:**

Remove the hip restraint bolts, set the OEM seat bottom with the hip restraints on top the middle pod seat hat rack. Secure through the flatbar under the seat bottom using:

(8)- 6mm x 50mm Hex Head Bolts,  
(8)- 1/4" flatwashers,  
(8)- 1/4" lockwashers.



**STEP 35:**

Place the Side Trim (Part#6929) onto the car, adjust to best fit. Drill 1/8" pilot holes at all locations using the Side Trim holes as guides.

Secure on top the Side Trim using:  
(4)- 1/4" x 1 1/4" ACG Pan Head SMS,  
(4)- 1/4" ACG Flatwashers.

Secure along side of the Side Trim using:  
(2)- 1/4" x 1 1/4" ACG Pan Head SMS,  
(2)- 1/4" ACG Flatwashers.

Repeat for other side.



TITLE: <b>RH080YDRBOE INSTALLATION INSTRUCTIONS</b>		
DRAWN BY: R.HAERER	DATE: FEB 16, 2017	DWG NO. # 7665-1
SHEET: 12 of 15	SCALE: Not To Scale	



**STEP 36:**

Lay the Threshold Cover (Part#6933) over where the two floor mats meet. Adjust for best fit. Secure with:  
(6)- 1/4" x 1 1/4" ACG Pan Head Sheet Metal Screws  
(6)- 1/4" ACG Flat Washers.

**STEP 37:**

Re-install the factory rear seat bottom and rear seat back with the basket assembly to the car.  
Or install your new M&M Rear seat Kit or Box to the car.



TITLE:		
RH080YDRBOE INSTALLATION INSTRUCTIONS		
DRAWN BY:	DATE:	DWG NO.
R.HAERER	FEB 16, 2017	# 7665-1
SHEET:	SCALE:	
13 of 15	Not To Scale	

# REDHAWK

## 4-PASSENGER STRETCH BOLT-ON

### Part# RH080YDRBOE

## Electric / AC - YAMAHA - YDR

### BOLT KIT

#### Grade 8

- 6-  $\frac{3}{8}$ " x  $2\frac{3}{4}$ " HEX HEAD BOLTS
- 6-  $\frac{3}{8}$ " x 2" HEX HEAD BOLTS
- 26-  $\frac{3}{8}$ " FLATWASHERS
- 12-  $\frac{3}{8}$ " LOCKNUTS
- 2-  $\frac{5}{16}$ " x  $3\frac{1}{2}$ " HEX HEAD BOLTS
- 2-  $\frac{5}{16}$ " x 3" HEX HEAD BOLTS
- 4-  $\frac{5}{16}$ " x  $1\frac{3}{4}$ " HEX HEAD BOLTS
- 16-  $\frac{5}{16}$ " FLATWASHERS
- 8-  $\frac{5}{16}$ " LOCKNUTS

#### ACG Black

- 2- 6mm x 25mm HEX HEAD BOLTS
- 10- 6mm x 50mm HEX HEAD BOLTS
- 34-  $\frac{1}{4}$ " x  $1\frac{1}{4}$ " PAN HEAD SHEET METAL SCREWS
- 2-  $\frac{1}{4}$ " x  $1\frac{3}{4}$ " HEX HEAD BOLTS
- 50-  $\frac{1}{4}$ " FLATWASHERS

#### SS

- 4- 8mm x 30mm HEX HEAD BOLTS
- 6-  $\frac{5}{16}$ " x  $1\frac{3}{4}$ " TRUSS HEAD BOLTS
- 6-  $\frac{5}{16}$ " LOCKNUTS
- 4-  $\frac{5}{16}$ " LOCKWASHERS
- 12-  $\frac{1}{4}$ " LOCKWASHERS



TITLE: RH080YDRBOE INSTALLATION INSTRUCTIONS		
DRAWN BY: R.HAERER	DATE: FEB 16, 2017	DWG NO. # 7665-1
SHEET: 14 of 15	SCALE: Not To Scale	

# REDHAWK

## 4-PASSENGER STRETCH BOLT-ON

### Part# RH080YDRBOE

### Electric / AC - YAMAHA - YDR

### BOX KIT

- 1- Bolt Kit
- 1- Instructions
- 2- Frame Tubes 1-(Part#6901) & 1-(Part#6903)
- 1- Middle Floor Frame (Part#6904)
- 2- Side Floor Frames (Part#6905)(R&L)
- 1- Wire Harness (Part#6917)
- 1- Floor Cover (Part#6906)
- 1- Floormat (Part#6907)
- 2- Side Trim (Part#6929)(R&L)
- 1- Threshold Cover (Part#6933)
- 2- 4 $\frac{3}{4}$ "x6" Kick Mat (Part#5988)
- 1- Brake Cable (Part#PA1593)
- 1- Steering Spacer (Part #4130)
- 2- Seat Support Post (Part #7968)
- 1- Seat Hat Rack (Part #7972)
- 2- Seat Back Brackets (Part #7967)
- 2- Sub Floor Supports (Part #7885)
- 1- Front Panel Cover (Part #7978)
- 2- Side Covers (Part #7894)
- 1- Grab Handle (Part #7969)



TITLE: RH080YDRBOE INSTALLATION INSTRUCTIONS		
DRAWN BY: R.HAERER	DATE: FEB 16, 2017	DWG NO. # 7665-1
SHEET: 15 of 15	SCALE: Not To Scale	