

**REDHAWK**  
**4-PASSENGER STRETCH BOLT-ON**  
**Part# RH080YDRBOG**  
**GAS / EFI - YAMAHA - YDR**  
**INSTALLATION INSTRUCTIONS**



TITLE:		
RH080YDRBOG INSTALLATION INSTRUCTIONS		
DRAWN BY:	DATE:	DWG NO.
R.HAERER/Rev CN	MAR 17, 2017	# 7664-3
SHEET:	SCALE:	
1 of 17	Not To Scale	

**STEP 1**



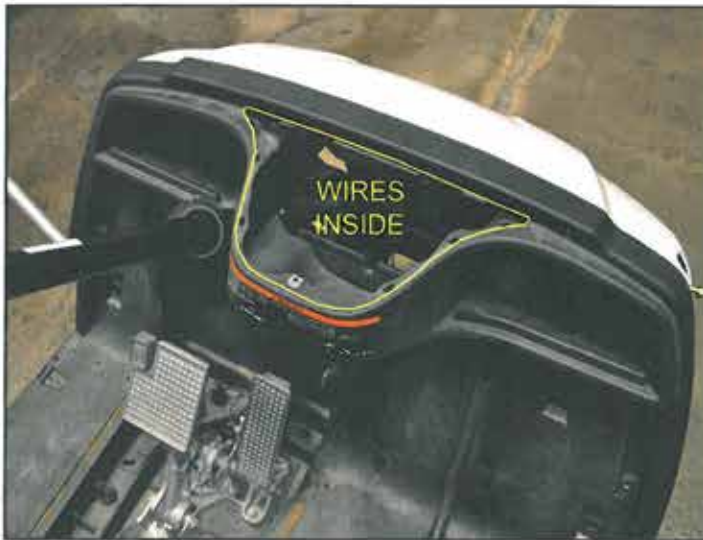
**\*NOTE:**

Save all bolts & factory connectors for re-use.

**STEP 1:**

- Disconnct and remove the Battery.
- Remove the Top from the car, along with the Front Legs.
- Remove the Seat Bottom & Seat Backs.
- Remove Rear Basket Assembly with the Rear Legs.
- Remove the Floormat.
- Remove the FNR Switch & FNR Bracket from the Rear Body.
- Remove the Choke Cable from the Rear Body.
- Remove the Floor Access Panel to the Accelerator & Brake Pedals.

**STEP 3**



**STEP 2:**

- Remove Dash Cup Holder Panel.
- Disconnct the Oil Light, Ignition Switch, & Back Up Buzzer wires from under the cup holders.
- Remove Dash Glove Box Assembly.
- Remove Side Trim.
- Remove Rear Body.
- Remove the Gas Line from the Gas Tank & remove the Gas Tank from the car.



TITLE:		
RH080YDRBOG INSTALLATION INSTRUCTIONS		
DRAWN BY:	DATE:	DWG NO.
R.HAERER/Rev CN	MAR 17, 2017	# 7664-3
SHEET:	SCALE:	
2 of 17	Not To Scale	

**STEP 3:**

Disconnect the Front Cowl from Plastic Floor.



STEP 3

**STEP 4:**

Disconnet the Accelerator Pedal.

Pull the wireharness from the front cowl back through the floor all the way back to the motor.

Remove the Accelerator & Brake Cables from the factory locations.

Remove Hex Head Bolts holding the plastic floor down to the frame.



STEP 4

**STEP 5:**

Remove the (4) bolts on the steering column.  
Lay Column to the side and out of the way.

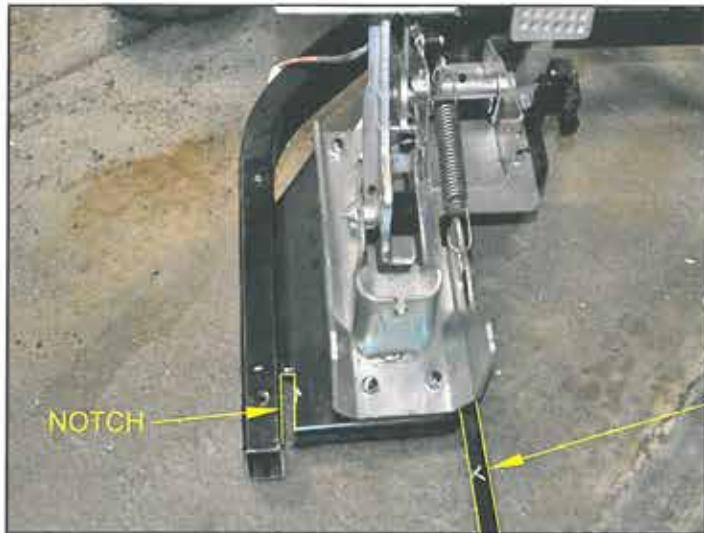


STEP 5



TITLE:		
RH080YDRBOG INSTALLATION INSTRUCTIONS		
DRAWN BY:	DATE:	DWG NO.
R.HAERER/Rev CN	MAR 17, 2017	# 7664-3
SHEET:	SCALE:	
3 of 17	Not To Scale	

**STEP 6a**



**STEP 6:**

Remove the Plastic Floor from the car.  
The Accelerator & Brake Pedal Assembly remove with the plastic floor.

**\*2012 & UP Cars see 6a**

**STEP 6a:**

If pedals stay attached to frame:

Remove pedal assembly support Angle from frame of car.

Notch Assembly next to frame 1 1/4" wide x 2 1/2" deep.

**STEP 7**



**STEP 7:**

Mark 1/4" in front of the channel for the rear body.

Cut the Plastic Floor on the marked line.

Cutting the Floor in half.

Trim back all plastic braces under floor after cutting in half.

**STEP 8**



**STEP 8:**

From the engine side of the front crossbar mount, measure 5" and mark on both sides of the frame. Make sure your marks are square.

Use jack stands to hold both the front half and rear half of the car up.

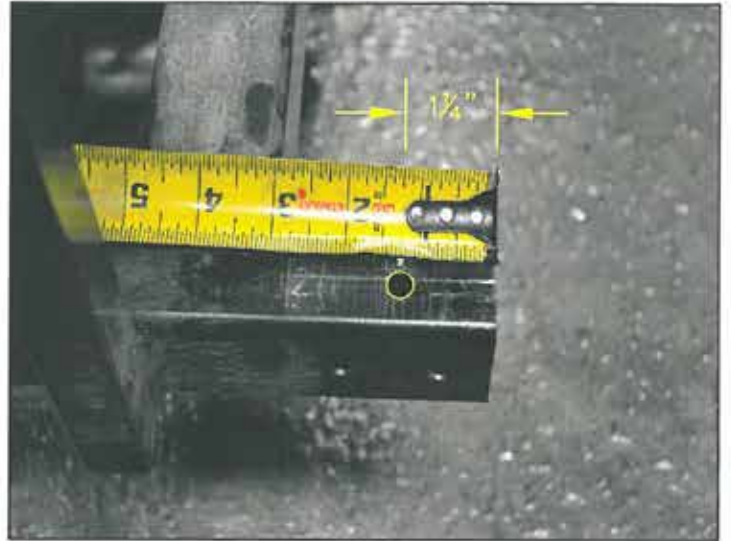
Cut the Frame in half.

Note: If your car has 1"x1" Sq. Tube Frame Gussets, you will need to cut them out. Then grind the frame down smooth.

TITLE:		
RH080YDRBOG INSTALLATION INSTRUCTIONS		
DRAWN BY: R.HAERER/Rev CN	DATE: MAR 17, 2017	DWG NO.
SHEET: 4 of 17	SCALE: Not To Scale	# 7664-3

**STEP 9:**

On the Rear side of the cut frame, measure back from the cut  $1/4"$ , Drill (1)-  $1/32"$  hole down through both sides of the tube. Repeat for other side.



**STEP 9**

**STEP 10:**

Install the Frame Tubes (Part#6903 & #6901) to the front half of the cut car.

Slide on the Frame Tubes. (Angle on frame goes under Pedal Assembly.)

The Frame Tubes have Tabs welded on the inside, the Tabs go on the bottom. (Front & Rear should be marked.)

Line the top hole up with the factory hole in the frame.

Drill (1)-  $1/32"$  hole through the top frame hole through all frame tubing, using the top holes as guides.

Repeat for other side.

Place (2)-  $5/16"$  x  $3/2"$  Hex Head Bolts Gr8, (2)-  $5/16"$  Flatwashers, into the frame to hold in place. Do NOT secure at this time!



**STEP 10**

**STEP 11:**

Slide the Rear of the Frame Tubes onto the rear half of the car. (Using a ratchet strap down the center of the frame is recommended.)

Line up the top holes, drill a  $1/32"$  hole through the top frame hole again through all frame tubing.

Place (2)-  $5/16"$  x 3" Hex Head Bolts Gr8, (4)-  $5/16"$  Flatwashers, (2)-  $5/16"$  Locknuts.



**STEP 11**



TITLE:		
RH080YDRBOG INSTALLATION INSTRUCTIONS		
DRAWN BY:	DATE:	DWG NO.
R.HAERER/Rev CN	MAR 17, 2017	# 7664-3
SHEET:	SCALE:	
5 of 17	Not To Scale	

**STEP 12**

**REAR**



**FRONT**



**STEP 12:**

Square up & level the new Frame Tubes with the old frame. Drill (2)-  $\frac{13}{32}$ " holes in the sides at each corner of the frame. Use the holes in the Frame Tubes as guides. At the front of the frame in both side holes secure with:

(4)-  $\frac{3}{8}$ " x 2" Hex Head Bolts, (Grade 8), (8)-  $\frac{3}{8}$ " Flatwashers, (4)-  $\frac{3}{8}$ " Locknuts. At the rear of the frame secure in the back hole only: (2)-  $\frac{3}{8}$ " x 2" Hex Head Bolts, (Grade 8), (4)-  $\frac{3}{8}$ " Flatwashers, (2)-  $\frac{3}{8}$ " Locknuts. Use (2)-  $\frac{3}{8}$ " x  $2\frac{3}{4}$ " Hex Head Bolts, (Grade 8), (2)-  $\frac{3}{8}$ " Flatwashers, at the rear front holes. Feed those bolts from the inside out. Do NOT secure these at this time!

**STEP 13:**

Remove the (2)- Top Bolts from the front of the frame tubes. Place the front part of the plastic floor onto the car at this time.

\*Make Sure Plastic misses all Bolt Heads in Frame, Trim if Needed.

Re-install the (2)- Top Bolts through the plastic and through the frame. You may need to drill out the plastic for the bigger bolts. Secure using:

(Grade 8) (2)-  $\frac{5}{16}$ " Flatwashers, (2)-  $\frac{5}{16}$ " Locknuts.

\*Do not over tighten!

Re-install bolts and Secure Plastic to Frame at all OEM Locations.



**STEP 13**



TITLE:			RH080YDRBOG INSTALLATION INSTRUCTIONS		
DRAWN BY:	DATE:	DWG NO.			
R.HAERER/Rev CN	MAR 17, 2017				
SHEET:	SCALE:	# 7664-3			
6 of 17	Not To Scale				

**STEP 14:**

Remove the (2)- Rear Side Bolts that were put in from the inside the frame pointing out.

Place the Middle Floor Frame (Part#6904) between the two Frame Rails.  
The hole in the top of the frame floor goes at the front.

Insert all bolts from the inside the frame pointing out.  
Re-install (2)- Rear side bolts.  
Finish connecting the frame floor to the frame rails with:  
(4)-  $\frac{3}{8}$ " x  $2\frac{3}{4}$ " Hex Head Bolts, (4)-  $\frac{3}{8}$ " Flatwashers.

Do NOT secure at this time!



STEP 14

**STEP 15:**

Re-install the rear plastic floor to the car.  
Secure to the frame with the (4)- OEM Bolts.



STEP 15

**STEP 16:**

Install the Side Floor Frames (Part#6905) to the outside of the Frame Rails. Secure them to the (3) Bolts sticking out of each side.  
Secure with (6)-  $\frac{3}{8}$ " Flatwashers, (6)-  $\frac{3}{8}$ " Locknuts.

Remove the jack stands from the car at this time.

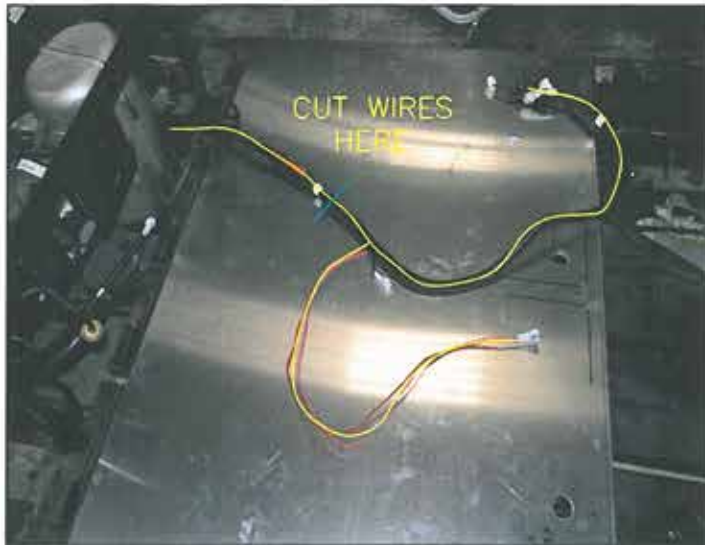


STEP 16



TITLE:		
RH080YDRBOG INSTALLATION INSTRUCTIONS		
DRAWN BY:	DATE:	DWG NO.
R.HAERER/Rev CN	MAR 17, 2017	# 7664-3
SHEET:	SCALE:	
7 of 17	Not To Scale	

**STEP 17**



**STEP 17:**

Cut the cars wire loom open seprate the FNR wires from the rest of the wires.  
 Cut the the remaining wires where shown, Do NOT cut the FNR wires.  
 Use the Wire Harness (Part#6917) to stretch the OEM wire harness.  
 Re-loom the stretched wires with 3/4" wire loom.  
 Use (2) of the remaining wires to extend the FNR wires.  
 Re-loom with 1/2" wire loom.

**\*Note:** When stretching wire harness, cut one wire at a time and connect with closest matching color wire. Not all wires will be used on every model car.

**STEP 18**



**STEP 18:**

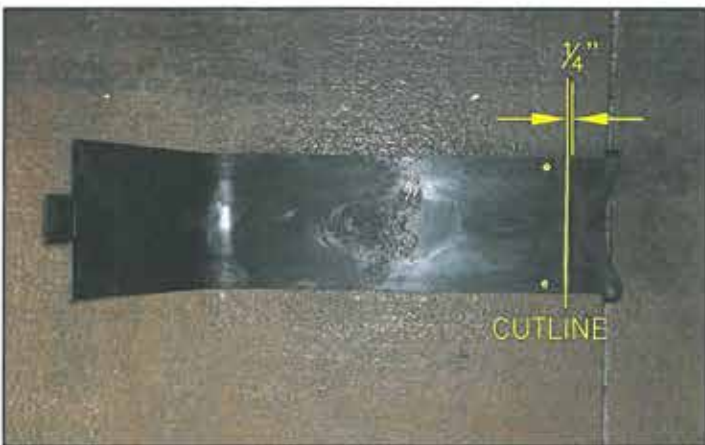
Re-attach any wire connections you disconnected at the rear of the car.  
 Run the new extended Wire Harness down the drivers side channel on top of the new frame .

Attach the Wire Harness to the plastic floor in OEM postions. Run the Wire Harness into the access panel in the front plastic floor behind the Brake and Accelerator Pedal and through the hole into the front cowl of the car.

Re-attach the Accelerator Pedal connections.  
 Drop FNR wires between car floors and down to attach later.

**\*EFI MODELS ONLY:**

Mark the breather hose access panel 1/4" in front of the rear body channel. Cut the access panel on the marked line, make sure your cut is straight. On the front section of panel measure from the cut forward 1", drill (2)- 1/4" holes, at 1/2" in from each side of the panel. Attach the new 44" breather hose to the breather box using OEM clamp removed earlier. Run new hose through rear access and under center sub floor on top of floors cable support straps and into the original front OEM floor location. Install rear portion of breather hose access panel to rear plastic floor using OEM fastners. Place the front panel cover into the original position and drill (2)- 1/4" holes into front flooring using the panel holes as guides. Secure the front panel cover into place using (2)- Plastic Push Pins (#1010434)



TITLE: <b>RH080YDRBOG INSTALLATION INSTRUCTIONS</b>		
DRAWN BY: R.HAERER/Rev CN	DATE: MAR 17, 2017	DWG NO. # 7664-3
SHEET: 8 of 17	SCALE: Not To Scale	



**STEP 19**

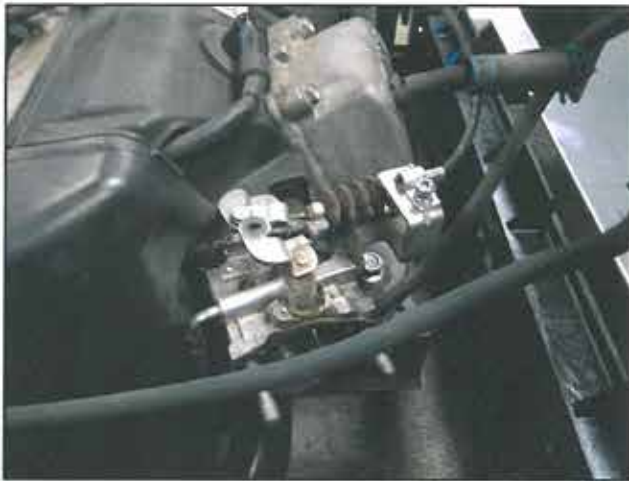


**STEP 19:**

Remove the Brake Cable from car.  
Install New Brake Cable to O.E.M. Brake Bracket in rear. Run Cable to Front of Car down the Middle Section Under the Sub Floor. Re-attach at front location using OEM Hardware.

*\*Note: EFI models skip Step#20.*

**STEP 20**



**STEP 20:**

Remove the breather box from the engine.  
Disconnet and remove the OEM choke cable, saving all fasteners for reuse.

**STEP 21**



**STEP 21:**

Remove the FNR & Accelerator Cables from the car, save all hardware.  
Install the new Accelerator Cable to the OEM with original fasteners.  
Run cable to the front of the car along side brake cable. Attach to front location using OEM hardware.



TITLE:		
RH080YDRBOG INSTALLATION INSTRUCTIONS		
DRAWN BY: R.HAERER/Rev CN	DATE: MAR 17, 2017	DWG NO.
SHEET: 9 of 17	SCALE: Not To Scale	# 7664-3

**STEP 22:**

Test fit new F-N-R cables splined shaft on rear end of car at OEM location. If the new cables shifter lever does not match proceed to 23a. As long as splines match attach new cables to shaft and OEM connections using original hardware. Run new cables along side Brake & Accelerator cables to front of car. Leave under car for a later step.



**STEP 22**

**STEP 22a:**

Remove OEM F-N-R cables from front bracket. Extend OEM cables & cut cables to remove original shifter lever. Save shifter lever matching rear end for use later. Extend new cables pulling springs and lever back to expose cable stops. Cut cables as close to factory cable stops as possible. Remove spring assemblies and slide shifter lever off cables. Insert new cables into original shifter lever (Matching rear end splines) Re install spring assemblies and crimp new cable stops onto end of each cable. Leave minimum amount of cable possible on back side of new stops. File edges of new stops after crimping as necessary to allow them to slide into spring assembly like OEM cable stops did. Attach new cables at OEM locations in rear using original hardware. Run under car along side Accelerator & Brake cables leave cables in floor for later step.



**STEP 22 & 22a**



**STEP 22**

**\*NOTE: Pay careful attention when re-assembling cable that shifter lever goes onto cables correctly! Shifter lever should look like an arrow with point towards cable not cable stops.**



TITLE: <b>RH080YDRBOG INSTALLATION INSTRUCTIONS</b>		
DRAWN BY: R.HAERER/Rev CN	DATE: MAR 17, 2017	DWG NO. # 7664-3
SHEET: 10 of 17	SCALE: Not To Scale	

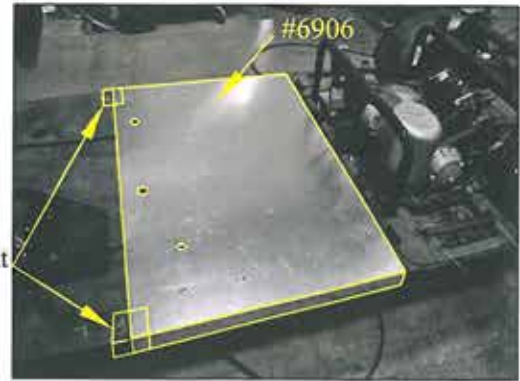
**STEP 23:**

Lay the Floor Cover (Part#6906) on the car.  
Line up the holes in the floor cover to the holes in the floor frame for best fit.

Adjust the Rear Plastic Floor for the best fit and tighten the Factory bolts holding it down.

NOTE! - Where aluminum floor cover meets front plastic factory floor, use 2 pieces of 6" Kick Mat, one on each side to cover outer edges of seam, Trim as Needed.

Kick Mat



**STEP 23**

**STEP 24:**

Cut Factory Trim, measure 1" from body molding,  
Cut Trim in Half on Square Line.

**STEP 25:**

Re-install the front half of Factory Side Trim.  
Re-attach Cowl to Factory Location.  
Re-install the Glove Box Dash Assembly.  
Re-attach the wiring connections inside the dash to the Oil Light, Ignition Switch, & Back Up Buzzer wires.  
Re-install the dash cup holder panel.  
Re-install the floor access cover panel.

**STEP 26:**

Replace steering colume using OEM bolts.  
(Cars 2012 & older see Step26a)  
Re-install cars floormat with OEM fastners.  
Place steering colume cover back into place.

**STEP 26a: On cars older than 2012**

Replace factory bolts with four (4) 8mmx30mm hex head bolts and four (4) 5/16" Lock Washers. Start all four bolts then slide steering spacer (Part #4130) into place at front edge of column plate and secure all four bolts in place. Do not over tighten.

\*This step will allow the driver more loading clearance.

**STEP 27:**

Install the Middle Floor Mat (Part#6907), adjust the mat for the best fit, Trim Edges as Needed.  
Cut the holes in the floor mat to line up with the holes in the floor.



**STEP 24**



**STEP 25 & 26**



**STEP 27**

TITLE:			RH080YDRBOG INSTALLATION INSTRUCTIONS		
DRAWN BY:	DATE:	DWG NO.			
R.HAERER/Rev CN	MAR 17, 2017	# 7664-3			
SHEET:	SCALE:				
11 of 17	Not To Scale				

**STEP 28:**

Re-Install battery, but do NOT connect cables.  
Re-Install gas tank.  
Re-Install the Rear Body Cover back onto the car.  
Re-Install Rear Half Factory Side Trim.

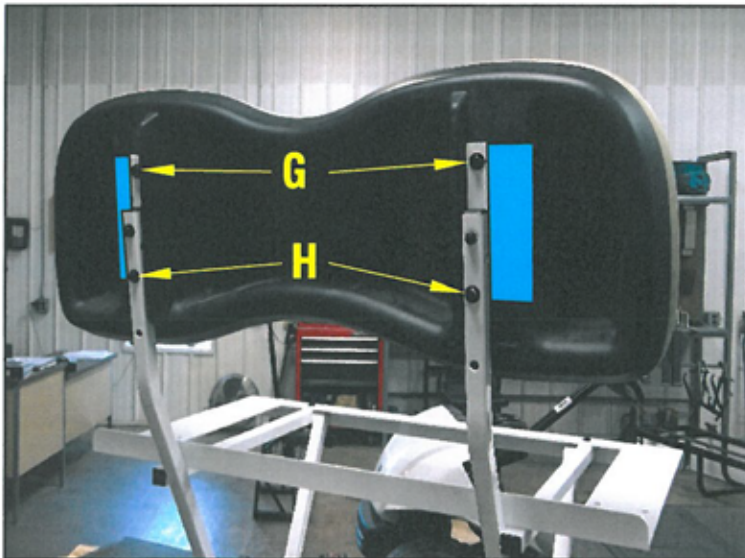
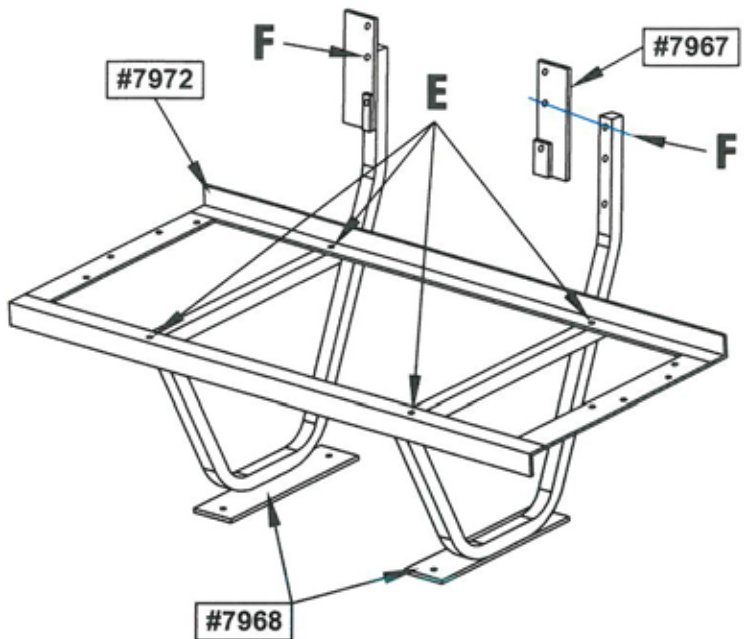
**STEP 29:**

Bolt together the middle pod.  
Secure the seat hat rack (Part #7972) to each seat support side post (Part #7968) at (Location E) using:  
(4)-  $\frac{5}{16}$ " x  $1\frac{3}{4}$ " truss head bolts, (4)-  $\frac{5}{16}$ " locknuts.

**STEP 30:**

Secure the seat back bracket (R&L)(Part#7967) to each seat support side post (Part #7968) at (Location F) using:  
(2)-  $\frac{5}{16}$ " x  $1\frac{3}{4}$ " truss head bolts,  
(2)-  $\frac{5}{16}$ " flatwashers, (2)-  $\frac{5}{16}$ " locknuts.

\*Note: truss head bolt goes on front side of bracket.



**STEP 31:**

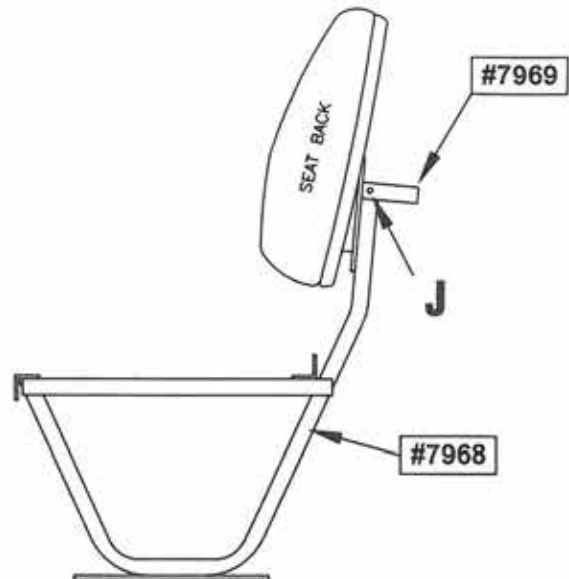
Secure the seat back to each seat support side post (Part #7968) & seat back bracket (Part#7967).  
At top (Location G) using:  
(2)- 6mm x 25mm hex head bolts,  
(2)-  $\frac{1}{4}$ " flatwashers,  $\frac{1}{4}$ " lockwashers.  
Secure seat back at bottom (Location H) using:  
(2)- 6mm x 50mm hex head bolts,  
(2)-  $\frac{1}{4}$ " flatwashers,  $\frac{1}{4}$ " lockwashers.



TITLE:		
RH080YDRBOG INSTALLATION INSTRUCTIONS		
DRAWN BY:	DATE:	DWG NO.
R.HAERER/Rev CN	MAR 17, 2017	# 7664-3
SHEET:	SCALE:	
12 of 17	Not To Scale	

**STEP 32:**

Secure the seat back grab handle (Part #7969) to each seat support side post (Part #7968) on the outside of the seat post tubes at (Location J) with:  
(2)- 1/4" x 1 1/2" hex head bolts,  
(4)- 1/4" flatwashers.



**STEP 33:**

Place the Pod assembly onto the car at this time. Center the Pod on the cars floor and set the front of the Pods floor mount at 28" from the front edge of the rear body molding. Drill (4)- 1/32" holes through the floor mat, floor and sub floor frame using the holes in the Pods floor mounts as guides.

Attach Pod to the floor using Grade 8 bolts and using (2)- Flatbar Sub Floor Supports (Part#7885) under the sub floor for additional strength. Secure at the locations drilled with following:

(4)- 5/16" x 1 3/4" hex head bolts, (8)- 5/16" flatwashers, (4)- 1/4" locknuts, (2)- Sub Floor Supports (#7885).



TITLE:		
RH080YDRBOG INSTALLATION INSTRUCTIONS		
DRAWN BY:	DATE:	DWG NO.
R.HAERER/Rev CN	MAR 17, 2017	# 7664-3
SHEET:	SCALE:	
13 of 17	Not To Scale	

**STEP 34:**

Run the FNR cables & switch wiring up through the hole in the flooring under pod. Install the FNR switch bracket (Part#6912) to the back of the face plate using:

(3)- 1/4" x 1 1/2" Pan Head Bolts,

(6)- 1/4" flatwashers,

(3)- 1/4" locknuts.

Attach FNR cables & wiring to the FNR switch using OEM hardware.

\*Adjust cables as needed.



**\*EFI models, skip Step 35. Insert Button plug #BPF-1-5 in Choke Cable Hole.**

**STEP 35:**

Attach choke cable (Part#1597) through the face plate using the OEM nut removed earlier. Run the choke cable through the hole in the flooring to the rear of the car. (Run along with the FNR cables.)



**\*EFI models, skip Step 36.**

**STEP 36:**

At rear of the car attach remaining end of new choke cable to OEM choke bracket & carburetor using the OEM hardware. Re-attach the breather box. Place the kick trim (Part#6928) along the front of the rear body to cover the OEM holes in the body. Trim for best fit.

**STEP 37:**

Place the front pod cover (Part#7980), up against the front of the seat support side post (Part #7968). Drill (6)- 1/8" holes into the tube of the seat support side post using the holes in the front pod cover as guides. Secure the cover to the pod with: (6)- 1/4" x 1 1/4" Pan Head Sheet Metal Screws, (6)- 1/4" flatwashers.

#7980



**STEP 38:**

Place the pod side covers (Part#7894), up against the outside of the seat support side post (Part #7968). Drill (5)- 1/8" holes into the tube of the seat support side post using the holes in the pod side covers as guides. Secure the side cover to the pod with:

(10)- 1/4" x 1 1/4" Pan Head Sheet Metal Screws,

(10)- 1/4" flatwashers.

TITLE:		
RH080YDRBOG INSTALLATION INSTRUCTIONS		
DRAWN BY:	DATE:	DWG NO.
R.HAERER/Rev CN	MAR 17, 2017	# 7664-3
SHEET:	SCALE:	
14 of 17	Not To Scale	

**STEP 39:**

Set the OEM seat bottom with the hip restraints in place on top the middle pod seat hat rack. Secure through the flatbar under the seat bottom using:  
(8)- 6mm x 50mm Hex Head Bolts,  
(8)- 1/4" flatwashers.



**STEP 40:**

Place the Side Trim (Part#6929) onto the car, adjust to best fit. Drill 1/8" pilot holes at all locations using the Side Trim holes as guides.

Secure on top the Side Trim using:  
(4)- 1/4" x 1 1/4" ACG Pan Head SMS,  
(4)- 1/4" ACG Flatwashers.

Secure along side of the Side Trim using:  
(2)- 1/4" x 1 1/4" ACG Pan Head SMS,  
(2)- 1/4" ACG Flatwashers.

Repeat for other side.



**STEP 41:**

Lay the Threshold Cover (Part#6933) over where the two floor mats meet. Adjust for best fit. Secure with:  
(6)- 1/4" x 1 1/4" ACG Pan Head Sheet Metal Screws  
(6)- 1/4" ACG Flat Washers.

**STEP 42:**

Re-install the factory rear seat bottom and rear seat back with the basket assembly to the car.  
Or install your new M&M Rear seat Kit or Box to the car.

Re-attach the battery cables.



TITLE:		
RH080YDRBOG INSTALLATION INSTRUCTIONS		
DRAWN BY: R.HAERER/Rev CN	DATE: MAR 17, 2017	DWG NO.
SHEET: 15 of 17	SCALE: Not To Scale	# 7664-3

# REDHAWK

## 4-PASSENGER STRETCH BOLT-ON

### Part# RH080YDRBOG

## GAS / EFI - YAMAHA - YDR

### BOLT KIT

#### Grade 8

- 6-  $\frac{3}{8}$ " x  $2\frac{3}{4}$ " HEX HEAD BOLTS
- 6-  $\frac{3}{8}$ " x 2" HEX HEAD BOLTS
- 26-  $\frac{3}{8}$ " FLATWASHERS
- 12-  $\frac{3}{8}$ " LOCKNUTS
- 2-  $\frac{5}{16}$ " x  $3\frac{1}{2}$ " HEX HEAD BOLTS
- 2-  $\frac{5}{16}$ " x 3" HEX HEAD BOLTS
- 4-  $\frac{5}{16}$ " x  $1\frac{3}{4}$ " HEX HEAD BOLTS
- 16-  $\frac{5}{16}$ " FLATWASHERS
- 8-  $\frac{5}{16}$ " LOCKNUTS

#### ACG

- 2- 6mm x 25mm HEX HEAD BOLTS
- 10- 6mm x 50mm HEX HEAD BOLTS
- 2-  $\frac{1}{4}$ " x  $1\frac{1}{2}$ " HEX HEAD BOLTS
- 3-  $\frac{1}{4}$ " x  $1\frac{1}{2}$ " PAN HEAD BOLTS
- 34-  $\frac{1}{4}$ " x  $1\frac{1}{4}$ " PAN HEAD SHEET METAL SCREWS
- 56-  $\frac{1}{4}$ " FLATWASHERS
- 3-  $\frac{1}{4}$ " LOCKNUTS

#### SS

- 4- 8mm x 30mm HEX HEAD BOLTS
- 6-  $\frac{5}{16}$ " x  $1\frac{3}{4}$ " TRUSS HEAD BOLTS
- 2-  $\frac{5}{16}$ " FLATWASHERS
- 6-  $\frac{5}{16}$ " LOCKNUTS
- 4-  $\frac{5}{16}$ " LOCKWASHERS
- 4-  $\frac{1}{4}$ " LOCKWASHERS
- 2- Cable Crimp Stops (#4181)
- 2- Plastic Push Pins (#1010434)
- 1- Button Plug (#BPF-1-5)



TITLE: RH080YDRBOG INSTALLATION INSTRUCTIONS		
DRAWN BY: R.HAERER/Rev CN	DATE: MAR 17, 2017	DWG NO. # 7664-3
SHEET: 16 of 17	SCALE: Not To Scale	



# REDHAWK

## 4-PASSENGER STRETCH BOLT-ON

### Part# RH080YDRBOG

### GAS / EFI - YAMAHA - YDR

### BOX KIT

- 1- Bolt Kit
- 1- Instructions
- 2- Frame Tubes 1-(Part#6901) & 1-(Part#6903)
- 1- Middle Floor Frame (Part#6904)
- 2- Side Floor Frames (Part#6905)(R&L)
- 1- Wire Harness (Part#6917)
- 1- Floor Cover (Part#6906)
- 1- Floormat (Part#6907)
- 2- Side Trim (Part#6929)(R&L)
- 1- Threshold Cover (Part#6933)
- 2- 4¾"x6" Kick Mat (Part#5988)
- 1- Kick Trim (Part#6928)
- 1- Brake Cable
  - \*2014 & Dn (Part#PA1593)
  - \*2015 & Up (Part#PA1620 & #PA1621)
- 1- FNR Bracket (Part#6912)
- 1- FNR Cable (Part#1596)
- 1- Choke Cable (Part#1597)
- 1- 2" Breather Hose (44")
- 1- Accelerator Cable
  - \*2011 & Dn (Part#PA1594)
  - \*2012 & Up (Part#PA1595)
- 1- Steering Spacer (Part #4130)
- 2- Seat Support Post (Part #7968)
- 1- Seat Hat Rack (Part #7972)
- 2- Seat Back Brackets (Part #7967)
- 2- Sub Floor Supports (Part #7885)
- 1- Front Panel Cover (Part #7980)
- 2- Side Covers (Part #7894)
- 1- Grab Handle (Part #7969)

TITLE: <h2 style="margin: 0;">RH080YDRBOG</h2> <h3 style="margin: 0;">INSTALLATION INSTRUCTIONS</h3>		
DRAWN BY: R.HAERER/Rev CN	DATE: MAR 17, 2017	DWG NO. # 7664-3
SHEET: 17 of 17	SCALE: Not To Scale	



